

The Star-Forming Region NGC 602 in the SMC

Markus Schmalzl

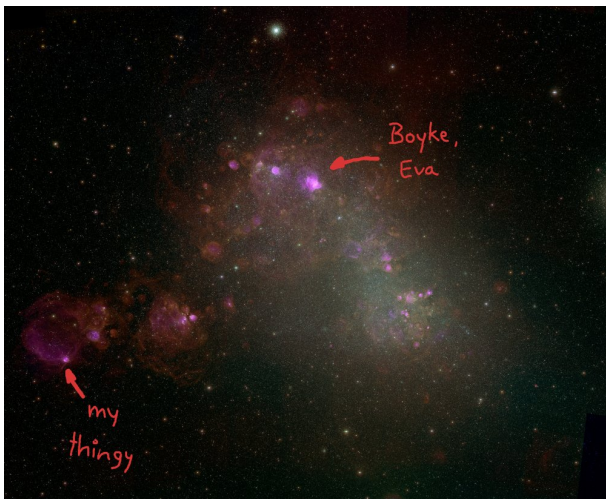
27 March 07

CONTENTS

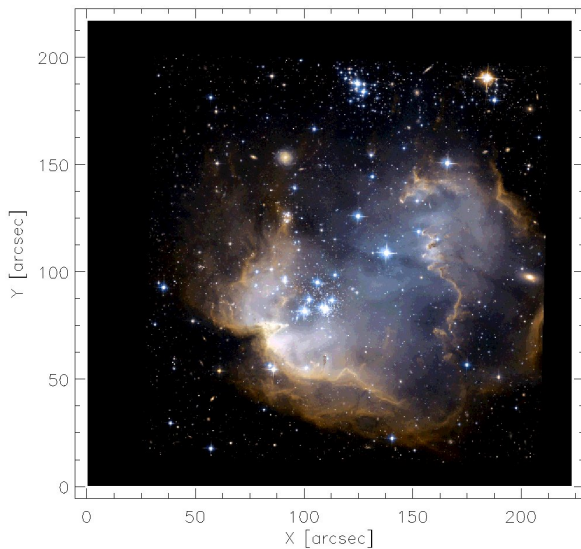
- NGC 602 region
- Color-Magnitude-Diagram
- three Stellar Clusters in the region
- NGC 602 Mass Spectrum
- NGC 602 Age estimation
- Summary



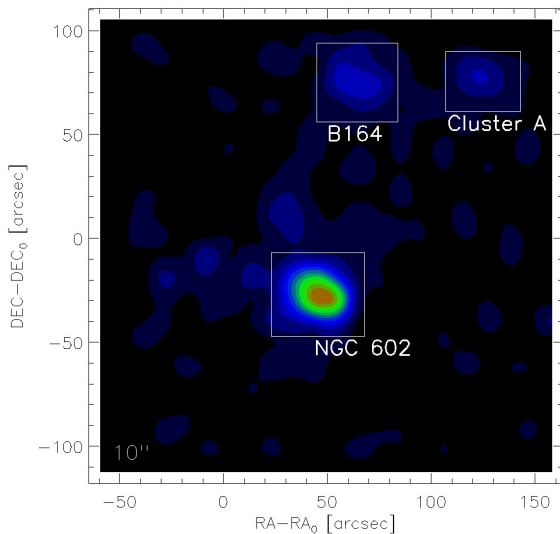
NGC 602 IN THE WING OF THE SMC



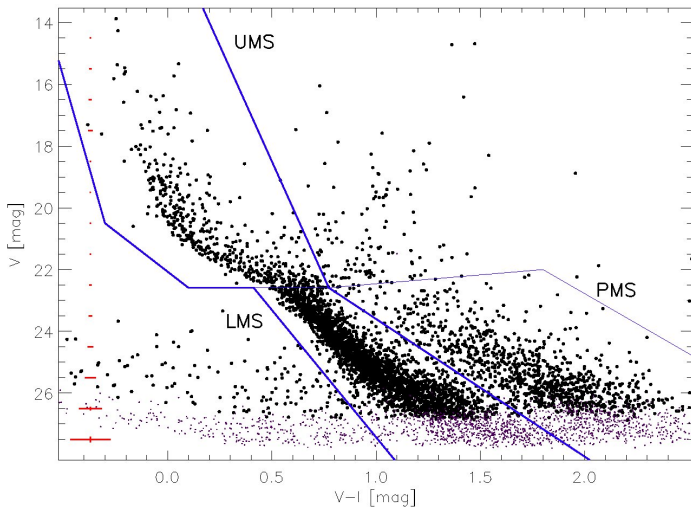
http://www.noao.edu/image_gallery/images/d4/SMC.jpg

NGC 602 IN V, I AND H_{α} 

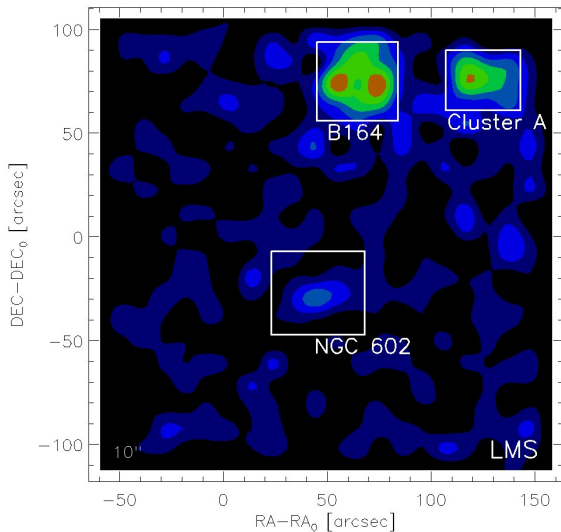
STELLAR DENSITY



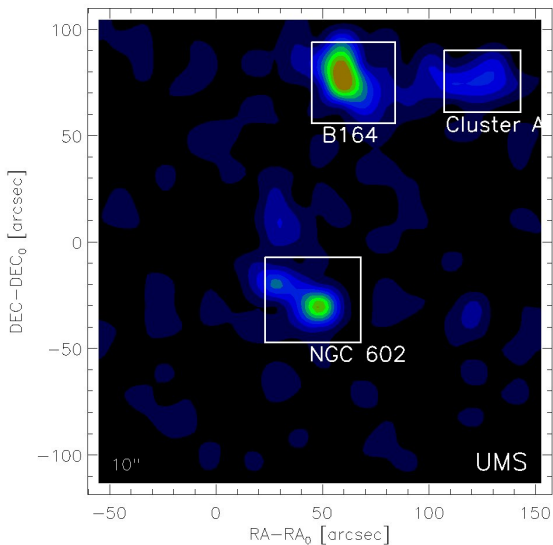
COLOR-MAGNITUDE-DIAGRAM OF ALL STARS



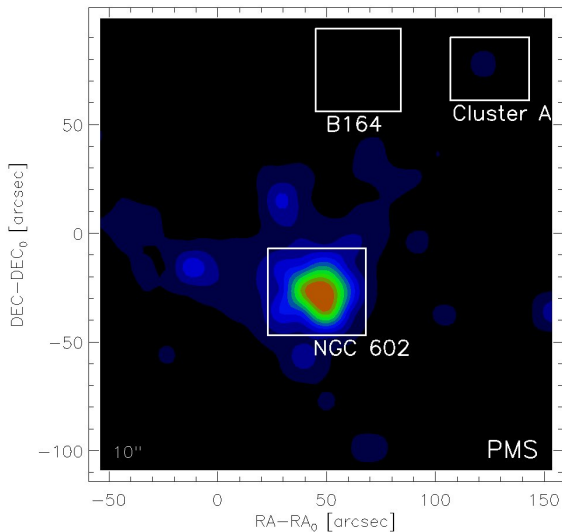
LOWER-MAIN-SEQUENCE STARS



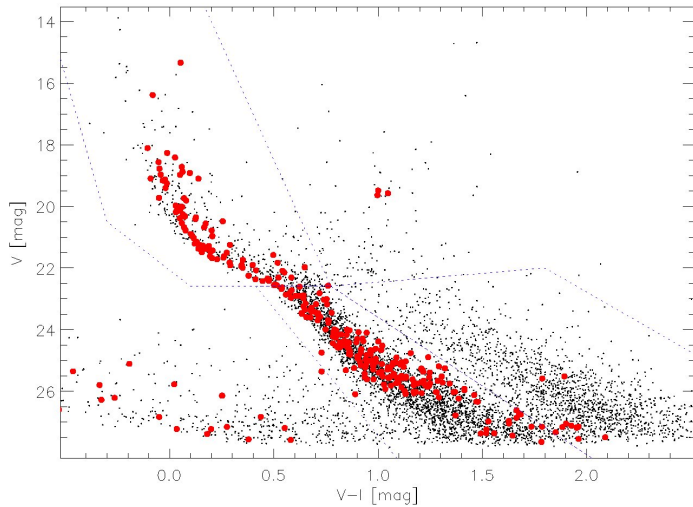
UPPER-MAIN-SEQUENCE STARS



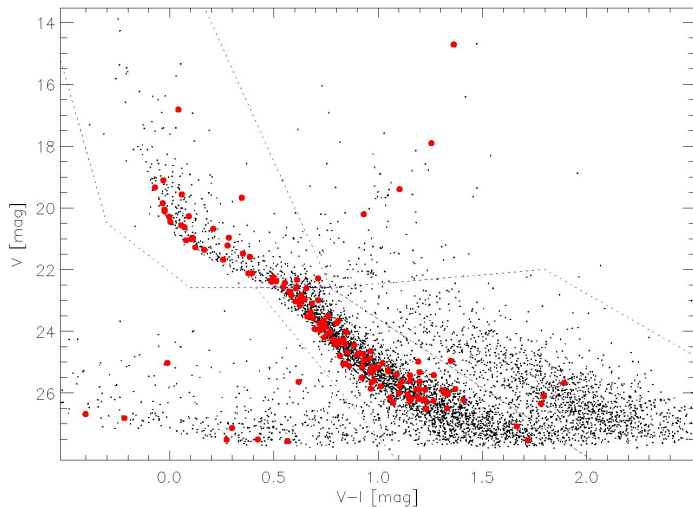
PRE MAIN-SEQUENCE STARS



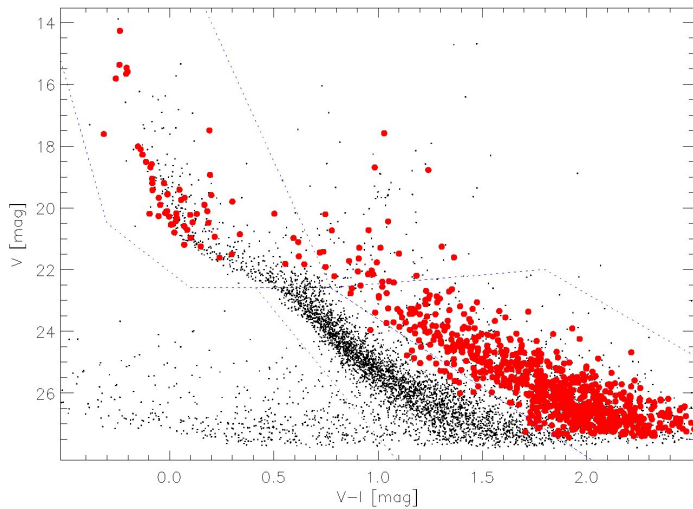
BRÜCK 164



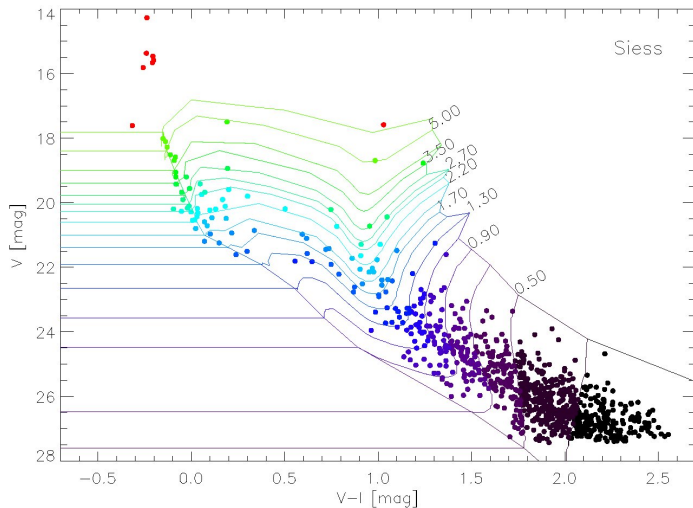
CLUSTER A



NGC 602

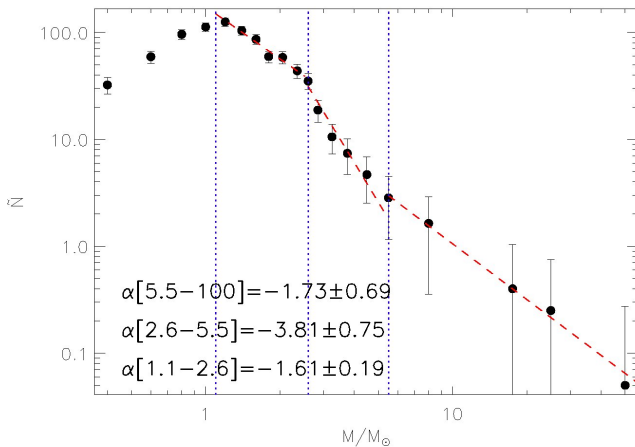


OBTAINING THE MASS SPECTRUM

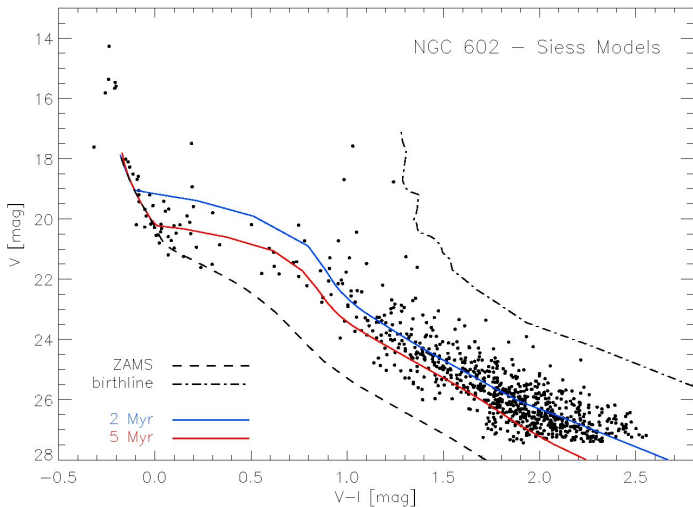


MASS SPECTRUM

Power law of the form $\tilde{N} \sim M^\alpha$



ISOCHRONE FITTING



SUMMARY



- NGC 602 is a young cluster with an age of 2-5 Myr
- Cluster A and B 164 are definitely older
- Mass Spectrum similar to OB Associations in the MW

SUMMARY

it's over... !!!

