

# Radio continuum emission in the northern Galactic plane: Sources and spectral indices from the THOR survey<sup>★</sup>

Y. Wang<sup>1</sup>, S. Bühr<sup>1</sup>, M. Rugel<sup>1</sup>, H. Beuther<sup>1</sup>, K. G. Johnston<sup>2</sup>, J. Ott<sup>3</sup>, J. D. Soler<sup>1</sup>, A. Brunthaler<sup>4</sup>, L. D. Anderson<sup>5,6,7</sup>, J. S. Urquhart<sup>8</sup>, R. S. Klessen<sup>9,10</sup>, H. Linz<sup>1</sup>, N. M. McClure-Griffiths<sup>11</sup>, S. C. O. Glover<sup>9</sup>, K. M. Menten<sup>4</sup>, F. Bigiel<sup>9</sup>, M. Hoare<sup>2</sup>, and S. N. Longmore<sup>12</sup>

<sup>1</sup> Max-Planck Institute for Astronomy, Königstuhl 17, 69117 Heidelberg, Germany  
e-mail: wang@mpia.de

<sup>2</sup> School of Physics and Astronomy, University of Leeds, Leeds LS2 9JT, UK

<sup>3</sup> National Radio Astronomy Observatory, PO Box O, 1003 Lopezville Road, Socorro, NM 87801, USA

<sup>4</sup> Max-Planck-Institut für Radioastronomie, Auf dem Hügel 69, 53121 Bonn, Germany

<sup>5</sup> Department of Physics and Astronomy, West Virginia University, Morgantown, WV 26506, USA

<sup>6</sup> Adjunct Astronomer at the Green Bank Observatory, PO Box 2, Green Bank, WV 24944, USA

<sup>7</sup> Center for Gravitational Waves and Cosmology, West Virginia University, Chestnut Ridge Research Building, Morgantown, WV 26505, USA

<sup>8</sup> School of Physical Sciences, University of Kent, Ingram Building, Canterbury, Kent CT2 7NH, UK

<sup>9</sup> Universität Heidelberg, Zentrum für Astronomie, Institut für Theoretische Astrophysik, Albert-Ueberle-Str. 2, 69120 Heidelberg, Germany

<sup>10</sup> Universität Heidelberg, Interdisziplinäres Zentrum für Wissenschaftliches Rechnen, INF 205, 69120 Heidelberg, Germany

<sup>11</sup> Research School of Astronomy and Astrophysics, The Australian National University, Canberra, ACT, Australia

<sup>12</sup> Astrophysics Research Institute, Liverpool John Moores University, IC2, Liverpool Science Park, 146 Brownlow Hill, Liverpool L3 5RF, UK

Received 14 June 2018 / Accepted 16 August 2018

## ABSTRACT

**Context.** Radio continuum surveys of the Galactic plane can find and characterize H II regions, supernova remnants (SNRs), planetary nebulae (PNe), and extragalactic sources. A number of surveys at high angular resolution ( $\leq 25''$ ) at different wavelengths exist to study the interstellar medium (ISM), but no comparable high-resolution and high-sensitivity survey exists at long radio wavelengths around 21 cm.

**Aims.** Our goal is to investigate the 21 cm radio continuum emission in the northern Galactic plane at  $< 25''$  resolution.

**Methods.** We observed a large percentage of the Galactic plane in the first quadrant of the Milky Way ( $l = 14.0\text{--}67.4^\circ$  and  $|b| \leq 1.25^\circ$ ) with the *Karl G. Jansky* Very Large Array (VLA) in the C-configuration covering six continuum spectral windows (SPW). These data provide a detailed view on the compact as well as extended radio emission of our Galaxy and thousands of extragalactic background sources.

**Results.** We used the BLOBCAT software and extracted 10 916 sources. After removing spurious source detections caused by the side lobes of the synthesized beam, we classified 10 387 sources as reliable detections. We smoothed the images to a common resolution of  $25''$  and extracted the peak flux density of each source in each SPW to determine the spectral indices  $\alpha$  (assuming  $I(\nu) \propto \nu^\alpha$ ). By cross-matching with catalogs of H II regions, SNRs, PNe, and pulsars, we found radio counterparts for 840 H II regions, 52 SNRs, 164 PNe, and 38 pulsars. We found 79 continuum sources that are associated with X-ray sources. We identified 699 ultra-steep spectral sources ( $\alpha < -1.3$ ) that could be high-redshift galaxies. About 9000 of the sources we extracted are not classified specifically, but based on their spatial and spectral distribution, a large percentage of these are likely to be extragalactic background sources. More than 7750 sources do not have counterparts in the SIMBAD database and more than 3760 sources do not have counterparts in the NED database.

**Conclusions.** Studying the long wavelengths centimeter continuum emission and the associated spectral indices allows us to characterize a large percentage of Galactic and extragalactic radio sources in the area of the northern inner Milky Way. This database will be extremely useful for future studies of a diverse set of astrophysical objects.

**Key words.** catalogs – surveys – radio continuum: general – techniques: interferometric

## 1. Introduction

A number of surveys at high angular resolution ( $\leq 20''$ ) at multiple wavelengths exist to study the interstellar medium (ISM), from infrared (e.g., UKIDSS<sup>1</sup>, Lucas et al. 2008;

<sup>★</sup> The full continuum catalog, the full Table 4, and all the fits files of the continuum data are available at the project website <http://www2.mpia-hd.mpg.de/thor/DATA/www/>, and at the CDS via anonymous ftp to [cdsarc.u-strasbg.fr](ftp://cdsarc.u-strasbg.fr) (130.79.128.5) or via <http://cdsarc.u-strasbg.fr/viz-bin/qcat?J/A+A/619/A124>

<sup>1</sup> UKIRT Infrared Deep Sky Survey.

*Spitzer*/GLIMPSE<sup>2</sup>, Benjamin et al. 2003; Churchwell et al. 2009, *Spitzer*/MIPSGAL<sup>3</sup>, Carey et al. 2009 ) to sub-millimeter/millimeter (e.g., ATLASGAL<sup>4</sup> and BGPS<sup>5</sup>, Schuller et al. 2009; Rosolowsky et al. 2010; Aguirre et al. 2011; Csengeri et al. 2014) and radio (e.g. MAGPIS<sup>6</sup>, CORNISH<sup>7</sup>, Helfand et al. 2006; Hoare et al. 2012) wavelengths. Previously, the best 21 cm H I line survey was the HI Very Large Array Galactic Plane Survey (VGPS, Stil et al. 2006), which has a resolution of 60'', significantly more coarse than the resolution of the aforementioned surveys. This was one of the motivations for initiating The H I, OH, Recombination line survey of the Milky Way (THOR<sup>8</sup>; Beuther et al. 2016). Using the *Karl G. Jansky* Very Large Array (VLA) in C-configuration, we achieve a spatial resolution of <25''. The WIDAR correlator at the VLA allows us to observe many spectral lines simultaneously, in particular several molecular OH transitions, a series of H $\alpha$  radio recombination lines (RRLs;  $n = 151$  to 186), and eight spectral windows (SPWs) to cover the continuum emission between 1 and 2 GHz (Bihl et al. 2015, 2016; Beuther et al. 2016; Rugel et al. 2018). We observed a large percentage of the Galactic plane in the first quadrant of the Milky Way ( $l = 14.0 - 67.4^\circ$  and  $|b| \leq 1.25^\circ$ ) in several semesters (from 2012 to 2014). The continuum data from the first half of the survey ( $l = 14.0 - 37.9^\circ$  and  $l = 47.1 - 51.2^\circ$ ) have been published by Bihl et al. (2016). In this paper, we combine all the continuum data and present the results from the full survey.

The radio continuum emission from 1 to 2 GHz is dominated by thermal free-free emission from electrons and non-thermal synchrotron emission of the relativistic electrons in magnetic fields (e.g., Wilson et al. 2013). These can be distinguished by the spectral index  $\alpha$ , assuming  $I(\nu) \propto \nu^\alpha$ , where  $I(\nu)$  is the intensity at frequency  $\nu$ . The thermal free-free emission shows an almost flat ( $\alpha = -0.1$ ) spectrum if it is optically thin or a positive spectral index if it is optically thick with values varying between  $-0.1$  and 2 (e.g., Keto 2003; Wilson et al. 2013). H II regions and planetary nebulae (PNe) are often the sources for thermal free-free emission. In contrast to this, synchrotron emission shows a negative spectral index whose value depends, amongst other things, on the particle energy distribution. Synchrotron emission with a spectral index  $\alpha < -0.5$  is often found toward extragalactic jets powered by an active galactic nucleus (AGN; e.g., Hey 1971; Rybicki & Lightman 1979). Galactic supernova remnants (SNRs) often show synchrotron emission with a spectral index around  $-0.5$  (e.g., Bhatnagar et al. 2011; Green 2014; Reynoso & Walsh 2015). Thus the spectral index can help us to characterize the nature of the continuum sources we detected in the survey. This allows us to determine whether they are Galactic or extragalactic, which is crucial for H I and OH absorption studies.

Compact Galactic radio sources associated with X-ray emission are usually pulsar wind nebulae (e.g., Briskin et al. 2005; Miller et al. 2005) or X-ray binaries (XRB or micro-quasars; Mirabel & Rodríguez 1998, 1999). By investigating the X-ray and radio flux ratios, the spectral indices and observations at other (optical/infrared) wavelengths of the Galactic sources in detail, we can also constrain the type of the

sources, i.e., low mass XRB, PN, and pulsars (e.g., Seaquist 1993; Maccarone et al. 2012; Tetarenko et al. 2016). With the high angular resolution (<25'') of our THOR continuum data, we not only can derive the spectral indices of the sources, but also further study the variation in frequency and space.

The paper is structured as follows: In Sect. 2, we present the observations and data reduction. Sect. 3 presents the methods we used to extract sources and determine the spectral indices. Section 4 describes the continuum catalog and the distribution of the continuum sources we extracted. The nature of continuum sources are discussed in Sect. 5. The conclusions and summary are presented in Sect. 6. The appendix gives additional information of the continuum observations and tables.

## 2. Observations and data reductions

We observed a part of the first quadrant of the Galactic plane ( $l = 14.0 - 67.4^\circ$  and  $|b| \leq 1.25^\circ$ ) with the *Karl G. Jansky* Very Large Array (VLA) in C-configuration at  $L$  band from 1 to 2 GHz. The detailed observing strategy and data reduction is discussed and described in Bihl et al. (2016) and Beuther et al. (2016). With the WIDAR correlator, we covered the H I 21 cm line, 4 OH lines, 19 H $\alpha$  recombination lines, and eight continuum bands, i.e., SPWs. Each continuum SPW has a band width of 128 MHz. Owing to strong contamination from radio frequency interference (RFI), two SPWs around 1.2 and 1.6 GHz were not usable and discarded. The remaining six SPWs are centered at 1.06, 1.31, 1.44, 1.69, 1.82, and 1.95 GHz. For the fields at  $l = 23.1 - 24.3^\circ$  and  $25.6 - 26.8^\circ$ , the SPW around 1.95 GHz is also severely affected by RFI and is therefore flagged (see Bihl et al. 2016).

The calibration and imaging were performed with the CASA<sup>9</sup> software package. We employed the RFlag algorithm, which was first introduced to AIPS by E. Greisen in 2011 to flag outliers in each visibility dataset before imaging. For imaging, we chose a pixel size of 2.5'' and *robust* = 0 as a weighting parameter, which results in a synthesized beam size varying from 9'' to 25'' depending on the SPW and the declination of various observing blocks and *uv*-coverage (see Table 1 for details). We also used the multiscale CLEAN in CASA to recover the large scale structure better, and chose the scale parameters as 1, 3, and 6 times the resolution element. The cleaning process was set to stop at a threshold of 5 mJy beam<sup>-1</sup> or 10<sup>5</sup> iterations, whichever was reached first. The noise of our data is dominated by the artifacts resulting from residual side lobes, and varies from  $\sim 0.3$  to  $>1$  mJy beam<sup>-1</sup> depending on the frequency and sky position. The thermal noise is  $\sim 0.1$  mJy beam<sup>-1</sup>. We discuss the noise level of the images in Sect. 3.

THOR+VGPS data: The 1.4 GHz continuum data from the VGPS survey (Stil et al. 2006) combined VLA D-configuration with single-dish observations from Effelsberg and have an angular resolution of 60''. The  $14.0^\circ < l < 17.5^\circ$  Galactic longitude range in the VGPS data is comprised of single-dish observations. We smoothed the THOR continuum data at 1.4 GHz to a resolution of 25'' and used the task "feather" in CASA to combine the THOR data with those from VGPS. While this combined dataset retains the high angular resolution of the THOR observations, it can recover the large scale structure. The combined image of the whole survey at 1.4 GHz in Fig. 1 shows that large scale H II regions and SNRs dominate the extended radio emission in the inner Galactic plane ( $l < 55^\circ$ ), while compact sources are distributed across the whole survey area (more prominent in

<sup>2</sup> Galactic Legacy Infrared Midplane Survey Extraordinaire.

<sup>3</sup> A 24 and 70 Micron Survey of the Inner Galactic Disk with MIPS.

<sup>4</sup> APEX Telescope Large Area Survey of the Galaxy.

<sup>5</sup> Bolocam Galactic Plane Survey.

<sup>6</sup> Multi-Array Galactic Plane Imaging Survey.

<sup>7</sup> the Co-Ordinated Radio "N" Infrared Survey for High-mass star formation.

<sup>8</sup> <http://www.mpia.de/thor/Overview.html>

<sup>9</sup> <http://casa.nrao.edu>

**Table 1.** Synthesized beams of SPWs.

SPW	Frequency range (MHz)	Restoring beam size
spw-1060	989–1117	24.4'' × 15.1'' to 15.1'' × 14.7''
spw-1310	1244–1372	19.7'' × 12.5'' to 12.6'' × 12.2''
spw-1440	1372–1500	18.1'' × 11.1'' to 12.0'' × 11.6''
spw-1690	1628–1756	15.4'' × 9.1'' to 9.8'' × 9.5''
spw-1820	1756–1884	14.5'' × 8.9'' to 9.2'' × 9.1''
spw-1950	1884–2012	13.1'' × 8.1'' to 8.6'' × 8.2''
averaged image	spw-1440 & spw-1820	18.1'' × 11.1'' to 12.0'' × 11.6''
THOR+VGPS	1420	25'' × 25''

**Notes.** Averaged images are used for source extraction. The size of the restoring beam varies owing to declination and  $uv$ -coverage differences among observing blocks.

area  $l > 55^\circ$ ). These compact sources are most likely extragalactic sources, and we discuss them later. Anderson et al. (2017) used this dataset and identified 76 new Galactic SNR candidates in the survey area. Although the spectral band of the VGPS continuum ( $\sim 1$  MHz) is different from our THOR continuum data ( $\sim 128$  MHz), Anderson et al. (2017) showed that the flux retrieved from the combined data is consistent with the literature by comparing the flux density of the known SNRs (Green 2014). All the reduced continuum data, including the THOR+VGPS dataset, can be accessed from the THOR survey website located at <http://www.mpia.de/thor> and are available at the CDS.

### 3. Source extraction and spectral index determination

While the combined THOR+VGPS dataset exists for the 1.4 GHz, for the other bands only the THOR data are available. Therefore, all spectral index analysis is performed on the THOR-only data. To achieve the best signal-to-noise ratio (S/N), we chose the two SPWs, spw-1820 and spw-1440, that are least affected by RFI and have the lowest noise, smoothed them into the same resolution, and then averaged them for source extraction. Since the noise of our data is dominated by side-lobe noise, we followed the method described in Hales et al. (2012) and Bihl et al. (2016) and constructed noise maps using the averaged residual image from the clean process. The noise maps are shown in Fig. A.1. We furthermore calculated the cumulative percentage noise level map area at a specific  $7\sigma$  noise level in  $\text{mJy beam}^{-1}$  (Fig. 2). While the lowest  $7\sigma$  noise level ( $\leq 1 \text{ mJy beam}^{-1}$ , dominated by thermal noise) is achieved in  $\sim 20\%$  of the survey area, more than 60% of the survey area has a  $7\sigma$  noise level  $\leq 2 \text{ mJy beam}^{-1}$ . Compared to the first half of the survey (Bihl et al. 2016), the noise is better for the entire survey because in the large longitude Milky Way regions beyond Galactic longitudes of roughly  $51^\circ$  there are fewer strong sources (Fig. 1 and Fig. A).

We used the software BLOBCAT (Hales et al. 2012) to extract the sources from the averaged continuum images. Following the same criteria as in Bihl et al. (2016) for the first half of the survey, we set the detection threshold as  $5\sigma$  and the flooding threshold to the standard value of  $2.6\sigma$  (Hales et al. 2012), and extracted 10 916 sources. We then inspected each source visually, identified 530 sources as obvious observational side-lobe artifacts, and removed them from the catalog. The remaining 10 387 sources should be mostly real detections. It was difficult to determine whether some sources with a S/N of 5 to  $7\sigma$  were real.

Therefore, we considered sources with a S/N higher than  $7\sigma$  with higher confidence. In total, out of the 10 916 extracted sources, 7521 sources were detected with a S/N higher than  $7\sigma$ , 2866 have a S/N of 5 to  $7\sigma$ , 530 are observational side-lobe artifacts.

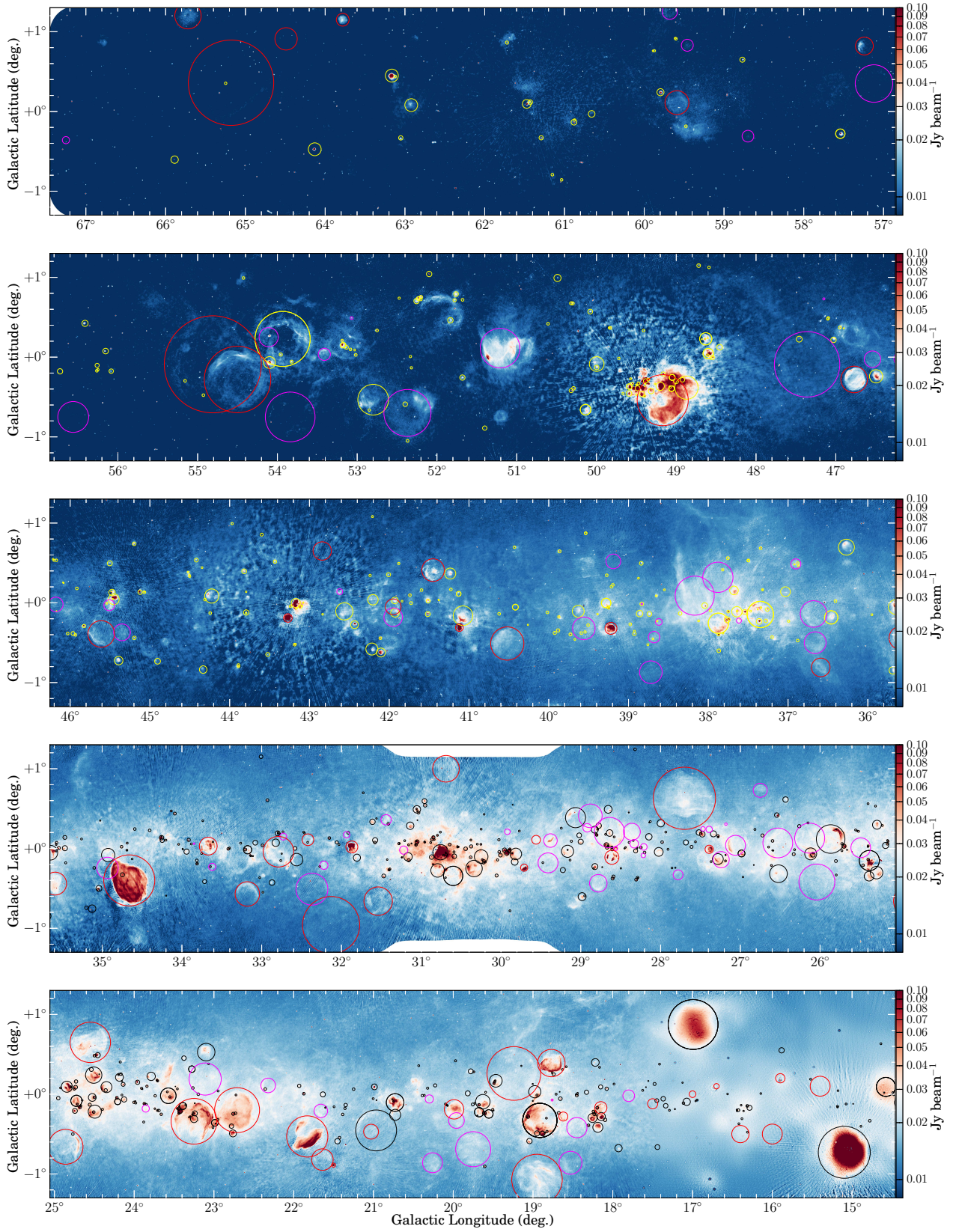
Following the same method described in Bihl et al. (2016), we performed a completeness test by extracting artificial compact sources from a  $0.5^\circ \times 0.5^\circ$  region with a constant noise level. The result shows that we detected 94% of all sources with a peak intensity above  $7\sigma$  (Fig. 3). Combining the noise map, we constructed completeness maps for different peak intensities; these maps are shown in Appendix B.

Since our observations cover a wide range in frequency from 1 GHz to 2 GHz, we can determine the spectral indices for the sources we identified, assuming  $I(\nu) \propto \nu^\alpha$ . To do this, we first smooth all SPWs to a common resolution of  $25''$ , then extract the peak intensities. Since the integrated flux density suffers more from filtering effects for extended sources, we use only the peak intensity for the spectral index determination. We use the SciPy function “curve\_fit” to fit the peak intensity between 1 to 2 GHz of each source we extracted and derive the spectral index  $\alpha$  defined as  $I(\nu) \propto \nu^\alpha$  together with the uncertainty of  $\alpha$ . Since a single SPW image has a lower S/N than the averaged image we used for source extraction, we choose a lower threshold ( $3\sigma$ ) for spectral index determination. We fit only the peak intensities that are higher than three times of the noise level of the respective SPW, i.e., a reliable intensity (see also Bihl et al. 2016). For 8228 sources we can extract a reliable peak intensity from at least two SPWs and derive a spectral index. We list the number of SPWs that were used for spectral index determination in the continuum source catalog as “fit\_spws”. For instance, fit\_spws = 6 means the peak intensity for all six SPWs is reliable and used for spectral index determination, fit\_spws = 4 means the peak intensity for only four SPWs is reliable and used for spectral index determination. Figure 4 shows the distribution of the uncertainties of the determined spectral index for all sources and for sources with a different number of SPWs. This clearly demonstrates that the more SPWs used to fit the spectral index, the smaller the uncertainty is. The mean uncertainty of the spectral indices are  $\Delta\alpha = 0.18, 0.43, 0.70, 1.1, 2.2$  for sources detected in 6, 5, 4, 3, and 2 SPWs, respectively. We consider all spectral indices fitted with four or more SPWs (fit\_spws  $\geq 4$ ) reliable.

### 4. Catalog

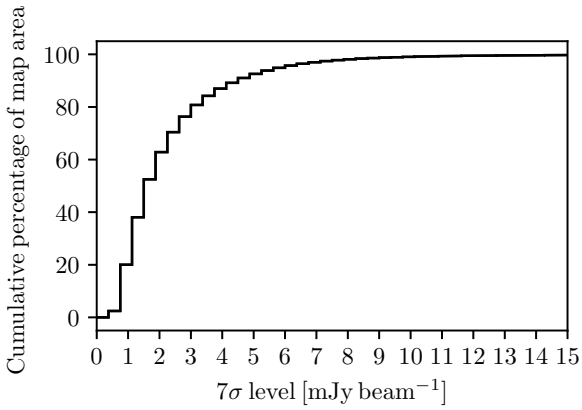
Our continuum catalog contains 31 columns for each source as described in detail in Table 2. We summarize the number of



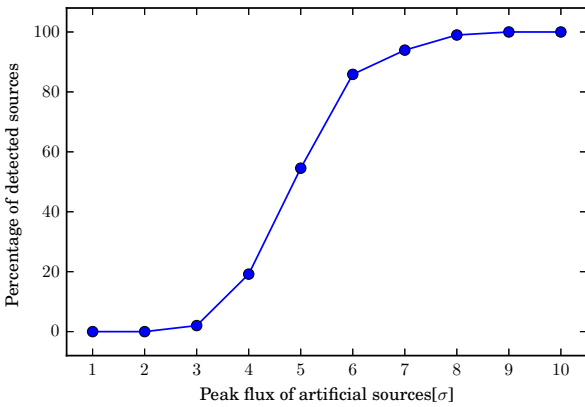


**Fig. 1.** THOR+VGPS 1.4 GHz continuum map of the whole survey. The yellow and black circles denote the WISE H II regions (Anderson et al. 2017) matched with our continuum sources (see also Sect. 5.3). The red circles indicate the SNRs from Green (2014). The magenta circles indicate the new SNR candidates identified in this combined dataset (Anderson et al. 2017). The synthesized beam size is 25". For regions  $l < 17.5^\circ$ , complementary D-configuration data do not exist. Therefore, in these regions we have only combined the THOR data with the Effelsberg data.





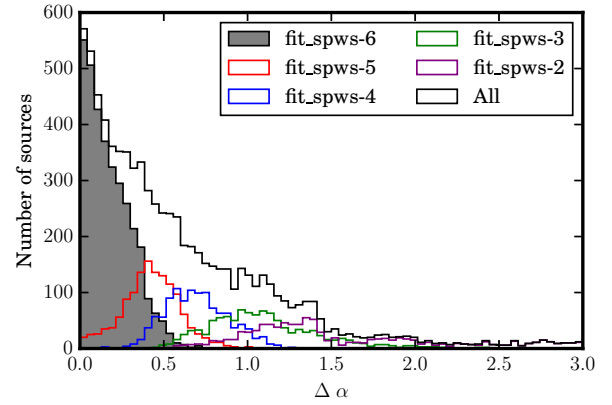
**Fig. 2.** Cumulative percentage noise level diagram. The percentage of the map area as a function of the noise level at a S/N of  $7\sigma$  in  $\text{mJy beam}^{-1}$ . More than 60% of the survey area has a noise level of  $7\sigma \lesssim 2 \text{ mJy beam}^{-1}$ .



**Fig. 3.** Completeness test plot. Percentage of the added artificial sources detected as a function of the source peak intensity in units of the noise level  $\sigma$ .

extracted sources in Table 3. The BLOBCAT algorithm identifies compact sources close to each other or superimposed on large extended emission as one single source. Additionally, large extended sources, such as SNRs, can be separated into several different sources. As the two examples shown in Fig. 5, two H II regions are identified into one single object in our catalog and the SNR W44 is resolved into 18 separate objects. Therefore, the exact numbers in Table 3 should be treated cautiously. We cross-matched the THOR continuum catalog with catalogs of different types of Galactic sources (H II regions, SNRs, etc.; see Sect. 5) and list all the matched counterparts. For a source matched with multiple sources, we also list the number of counterparts that the continuum source is associated with in column “Ncounter” in the catalog (Table 2). We also categorise sources in groups based on counterparts they share, i.e., sources associated with the same H II regions or SNRs are in the same group with a “GroupID”. The size of the groups are also listed as “GroupSize” (Table 2). In total, 126 sources have more than 1 counterpart and 153 sources are categorised into 49 groups with GroupSize varying from 2 to 19. We discuss the association between the different Galactic and extragalactic sources in detail in Sect. 5.

The distribution of the extracted sources along Galactic longitude and latitude is shown in Fig. 6. The majority (79%; Table 3) of the extracted sources are unresolved, and a weak gradient for



**Fig. 4.** Histogram of the uncertainties of the determined spectral indices. The black line includes all sources for which we are able to determine a spectral index; the gray shaded area represents the sources for which we have an intensity measurement in all 6 SPWs, and therefore the spectral index  $\alpha$  is derived from fitting all 6 SPWs; the red line includes sources fitted with 5 SPWs; the blue line includes sources fitted with 4 SPWs; the green line includes sources fitted with 3 SPWs; and the purple line includes sources fitted with 2 SPWs.

the those sources along Galactic longitude is shown in Fig. 6, where more weak unresolved sources are identified in the larger longitude regions. The resolved sources are evenly distributed along Galactic longitude, but larger sources ( $n_{\text{pix}} > 500$ ; effective radius of  $\sim 32''$ ) are more concentrated in the inner Galaxy, since these are mostly Galactic H II regions and SNRs. Another possible reason is that there are more mergers of smaller sources in the inner longitudes because of higher source density and longer path lengths through the Galaxy. The distribution along Galactic latitude reveals that the resolved sources are concentrated close to the Galactic midplane, whereas the distribution of the unresolved sources shows a dip at  $|b| < 0.5^\circ$ . The distribution of both resolved and unresolved sources drops at  $|b| > 1.0^\circ$  owing to higher noise at the edges of the survey area.

We did a Kolmogorov–Smirnov test (KS test) for the dip in the distribution of the unresolved sources at  $|b| < 0.5^\circ$ . We first re-binned the source counts into 100 bins and measured the mean value and standard deviation of the distribution at  $|b| > 0.5^\circ$  and  $|b| < 1.0^\circ$ . Then we generated a random artificial distribution with the same mean value and standard deviation. Finally we computed the KS statistic and  $p$ -value between the random artificial and real distribution with the SciPy function “ks\_2samp”. The mean KS statistic and  $p$ -value for 100 run is  $0.34 \pm 0.041$  and  $0.001 \pm 0.0018$ , respectively. Thus the dip at  $|b| < 0.5^\circ$  is statistically significant. A similar distribution along Galactic latitude is also found in the first half of our survey (Bihr et al. 2016) and in the MAGPIS survey (Helfand et al. 2006). Fewer unresolved sources are identified at  $|b| < 0.5^\circ$  and in the inner Galaxy, which could be because the strong emissions from the extended Galactic sources such as H II regions and SNRs lower our detection completeness to weak sources toward the Galactic midplane and inner Galaxy (see Appendix B).

## 5. Discussion

### 5.1. Comparison with other surveys

The comparison between the peak positions of the common sources in the THOR (first half,  $l = 14.0 - 37.9^\circ$  and  $l = 47.1 - 51.2^\circ$ ), MAGPIS (Helfand et al. 2006), and CORNISH surveys

**Table 2.** Description of the continuum source catalog entries.

Col. Num.	Name	Unit	Description
1	Gal. ID		Name of the source the form G“Gal. longitude”±“Gal. latitude” <sup>a</sup> .
2	RA	deg	Right ascension in J2000 of the peak position.
3	Dec	deg	Declination in J2000 of the peak position.
4	S <sub>p</sub> <sup>b</sup>	Jy beam <sup>-1</sup>	Peak intensity of the aver. image used for source extraction (see Sect. 3).
5	S <sub>int</sub>	Jy	Integrated flux density of the averaged image (see Sect. 3).
6	S/N		Signal-to-noise ratio in the averaged image.
7	BMAJ	arcsec	Major axis of the synthesized beam used for source extraction.
8	BMIN	arcsec	Minor axis of the synthesized beam used for source extraction.
9	BPA	deg	Position angle of the synthesized beam used for source extraction.
10	n <sub>pix</sub>		Number of pixels flooded by BLOBCAT (see Sect. 3).
11	resolved_source		Resolved source label (see Sect. 3). 1 = Resolved, 0 = Point.
12	S <sub>p</sub> (spw-1060) <sup>c</sup>	Jy beam <sup>-1</sup>	Peak intensity around 1.06 GHz used for spectral index (see Sect. 3).
13	delta_S <sub>p</sub> (spw-1060) <sup>c</sup>	Jy beam <sup>-1</sup>	Uncertainty of peak intensity around 1.06 GHz.
14	S <sub>p</sub> (spw-1310) <sup>c</sup>	Jy beam <sup>-1</sup>	Peak intensity around 1.31 GHz used for spectral index (see Sect. 3).
15	delta_S <sub>p</sub> (spw-1310) <sup>c</sup>	Jy beam <sup>-1</sup>	Uncertainty of peak intensity around 1.31 GHz.
16	S <sub>p</sub> (spw-1440) <sup>c</sup>	Jy beam <sup>-1</sup>	Peak intensity around 1.44 GHz used for spectral index (see Sect. 3).
17	delta_S <sub>p</sub> (spw-1440) <sup>c</sup>	Jy beam <sup>-1</sup>	Uncertainty of peak intensity around 1.44 GHz.
18	S <sub>p</sub> (spw-1690) <sup>c</sup>	Jy beam <sup>-1</sup>	Peak intensity around 1.69 GHz used for spectral index (see Sect. 3).
19	delta_S <sub>p</sub> (spw-1690) <sup>c</sup>	Jy beam <sup>-1</sup>	Uncertainty of peak intensity around 1.69 GHz.
20	S <sub>p</sub> (spw-1820) <sup>c</sup>	Jy beam <sup>-1</sup>	Peak intensity around 1.82 GHz used for spectral index (see Sect. 3).
21	delta_S <sub>p</sub> (spw-1820) <sup>c</sup>	Jy beam <sup>-1</sup>	Uncertainty of peak intensity around 1.82 GHz.
22	S <sub>p</sub> (spw-1950) <sup>c</sup>	Jy beam <sup>-1</sup>	Peak intensity around 1.95 GHz used for spectral index (see Sect. 3).
23	delta_S <sub>p</sub> (spw-1950) <sup>c</sup>	Jy beam <sup>-1</sup>	Uncertainty of peak intensity around 1.95 GHz.
24	alpha		Spectral index of source we derived (see Sect. 3).
25	delta_alpha		Uncertainty of spectral index.
26	fit_spws		Number of SPWs used to fit the spectral index (see Sect. 3).
27	Note <sup>d</sup>		“HII”, “SNR <sub>green</sub> ”, “SNR <sub>anderson</sub> ”, “PN”, “PSR”, “Xray”, “jets”(see Sect. 5).
28	Counterparts		The counterparts of the H II region <sup>e</sup> , SNR <sup>f</sup> , the planetary nebula <sup>g</sup> and the pulsars <sup>h</sup> .
29	Ncounter		The total number of counterparts that the continuum source is associated with.
30	GroupID		The Group of continuum sources associated with one or more same counterparts.
31	GroupSize		The number of the continuum sources in the same group.

**Notes.** <sup>(a)</sup> Indicating the peak position. <sup>(b)</sup> The synthesized beam is different for different fields and is given in rows 7–9. <sup>(c)</sup> The synthesized beam is smoothed to  $25'' \times 25''$ . <sup>(d)</sup> We classified the continuum source into different categories. “HII”: sources associated with H II regions from Anderson et al. (2014); “SNR<sub>green</sub>”: sources associated with SNRs from Green (2014); “SNR<sub>anderson</sub>”: sources associated with SNR candidates from Anderson et al. (2017); “PN”: sources classified as planetary nebula; “PSR”: sources classified as pulsars; “Xray”: sources associated with X-ray sources; “jets”: sources classified as extragalactic jets candidates. <sup>(e)</sup> Anderson et al. (2014). <sup>(f)</sup> Green (2014), Anderson et al. (2017). <sup>(g)</sup> Parker et al. (2016). <sup>(h)</sup> Manchester et al. (2005).

**Table 3.** Numbers of the catalog.

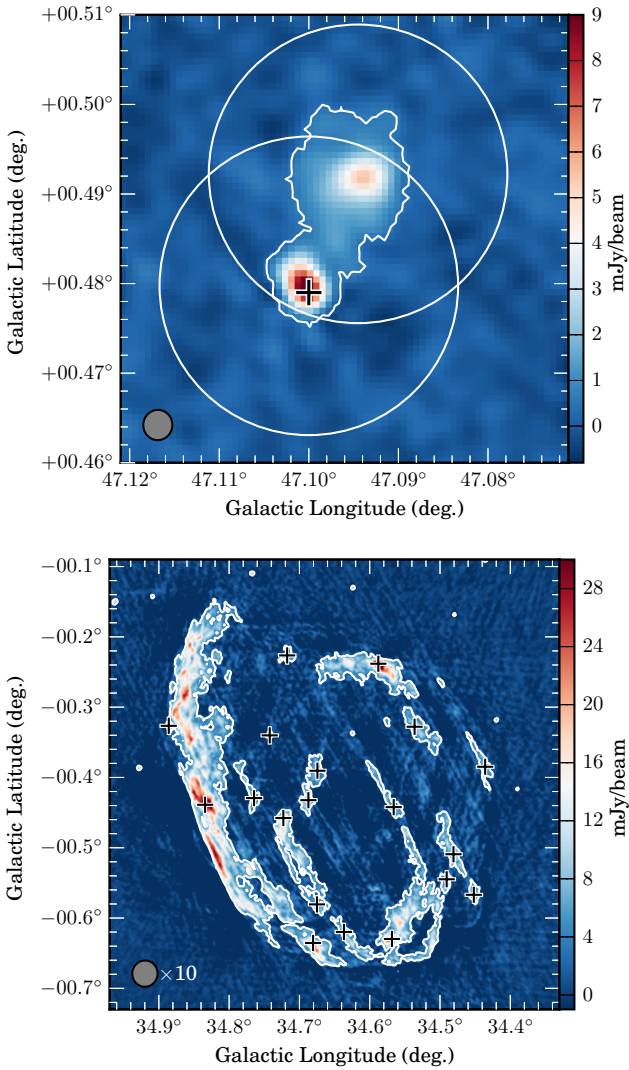
Description	Numbers	Percentage
All	10 387	100%
S/N > 7 $\sigma$	7521	72%
Resolved sources	2210	21%
Unresolved sources	8177	79%
n <sub>pix</sub> > 500	439	4%
fit_spws $\geq$ 4	5857	56%

(Hoare et al. 2012; Purcell et al. 2013) presented in Bühr et al. (2016) shows that the THOR survey has positional accuracy better than  $2.5''$  (full width at half maximum of the Gaussian fit to the position offset distribution; see Fig. 15 in Bühr et al. 2016). Considering that the pixel size of our continuum images is only  $2.5''$ , the spatial accuracy of the THOR survey is consistent with previous observations.

To check for consistency in the flux density, we compared the THOR with MAGPIS. Within our survey area ( $14.2^\circ < l < 67.4^\circ$ ,  $b < |1.25^\circ|$ ), the MAGPIS catalog contains 2256 discrete sources.

We cross-matched our catalog with the MAGPIS catalog with a matching radius of  $5''$ , and we found 1440 matches. We then selected sources with the following criteria: 1)  $S/N > 3$  in spw-1440, 2) unresolved in the THOR catalog, and 3) major axis smaller than  $10''$  in the MAGPIS catalog. We selected 735 sources using the aforementioned criteria. We compared the 1.4 GHz continuum flux density from the spw-1440 in THOR and the flux densities in MAGPIS, as shown in Fig. 7. The MAGPIS/THOR flux ratio shows a tight distribution around 1 with a median value of  $\sim 0.97$ . Most of the sources are within  $5\sigma$  from the flux ratio equals to one. Sixty-seven sources show a deviation larger than  $7\sigma$  from one, among which 56 sources have a ratio smaller than one. If we compare the integrated flux from MAGPIS to the peak flux from THOR for these 56 sources, the mean ratio is 1.08. This indicates that these sources could have been resolved by MAGPIS. For the remaining 11 sources the ratios are smaller than 1.18, therefore we cannot rule out the possibility of variability for these sources. Among these 11 sources, 2 are matched with X-ray sources (ratios are 1.02 and 1.08; see also Sect. 5.7). The remaining 9 sources do not match any identified source and they all have negative spectral indices, which suggests that they can be extragalactic sources.

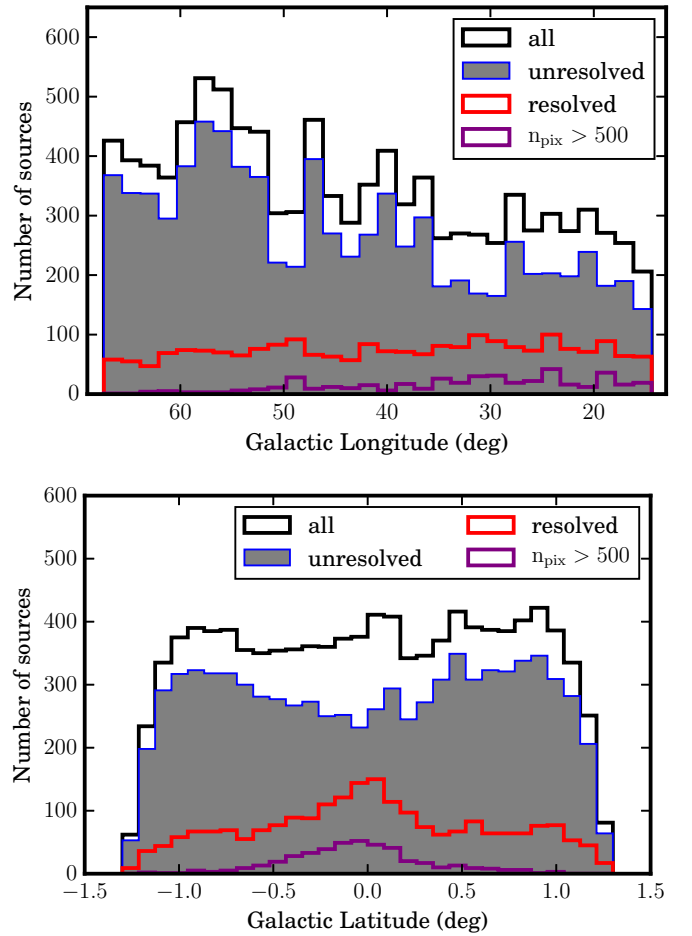




**Fig. 5.** Examples of source identification in the catalog. In both panels, the white contours represent the area of the source extracted by BLOCAT overlaid on the averaged image of spw-1440 and spw-1820, and the crosses denote the sources in the catalog. *Top panel:* source G47.100+0.479 consists of 2 H II regions (indicated with white circles, Anderson et al. 2014) close together. *Bottom panel:* the SNR W44 (e.g., Green 2014) is resolved into 19 sources in our catalog. The synthesized beam is shown in the bottom left corner of each panel. The beam in the right panel is scaled up to 10 times its original size.

With a matching radius of  $5''$ , we found 1320 unresolved THOR sources matched with the NRAO VLA Sky Survey (NVSS; Condon et al. 1998) sources. We compared the 1.4 GHz flux densities from THOR and NVSS; the THOR flux at spw-1440 is also tightly correlated with, but slightly higher than, the flux from NVSS. The median value of the NVSS/THOR flux ratio is about 0.93. By comparing the THOR 1.4 and 1.8 GHz average flux density of the first half of the survey with the NVSS flux density, Bühr et al. (2016) found similar results (see also Fig. 17 in Bühr et al. 2016). This discrepancy is yet undetermined, but this is beyond the scope of this work. The NVSS images show that the NVSS catalog is severely contaminated with obvious false detections, which could be due to side lobes from strong sources close to the Galactic plane or ghost artifacts (Grobler et al. 2014).

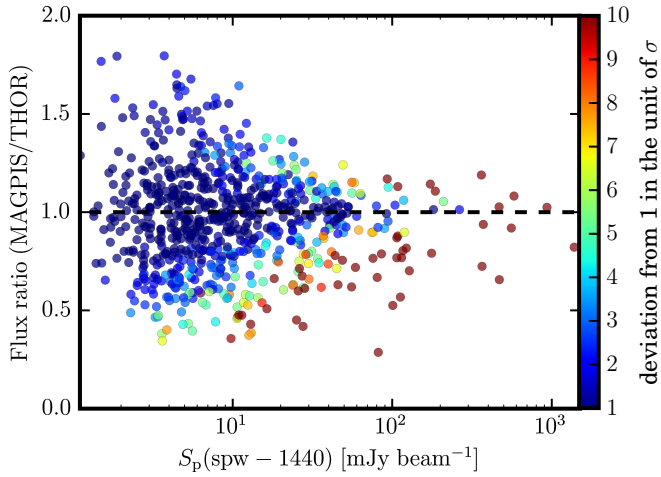
For the second half of the THOR survey, we applied the same data reduction method and source extraction algorithm as the first



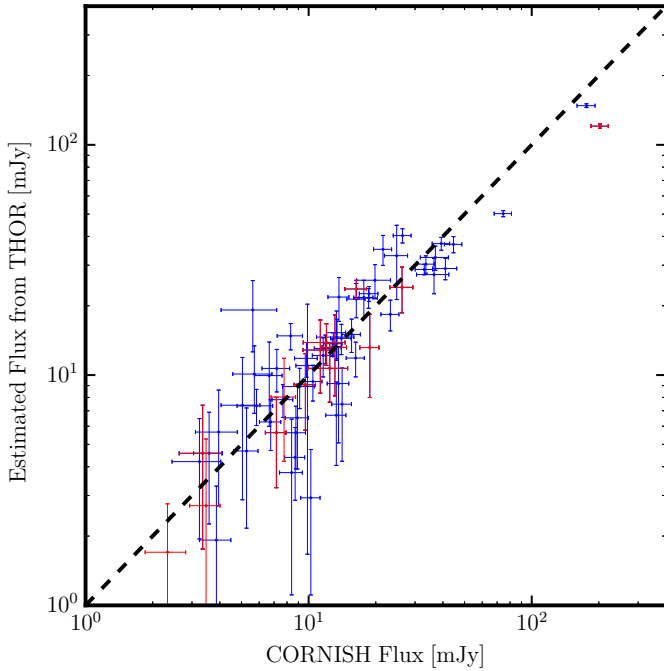
**Fig. 6.** Histograms for the source distribution along Galactic longitude (*top panel*) and latitude (*bottom panel*). In both panels, the black histogram shows the distribution of all the sources in the catalog; the other histograms show percentage of the catalog as indicated in each panel.

half (Bühr et al. 2016). Since there are overlapping areas between the first and second half of the survey, we further compare the position and flux density of the common sources between the two halves. Of the sources, 94% have position differences  $< 2.5''$  (the pixel size of the maps) and 93% of the sources have flux differences  $< 1 \text{ mJy beam}^{-1}$ . Therefore, the second half of the survey is consistent with the first half and with the previous radio surveys.

To verify the reliability of our spectral index determination, we extrapolated the flux density of selected sources to 5 GHz and compared this with the CORNISH catalog. The CORNISH catalog contains 2493 sources within the THOR survey area. With a matching radius of  $5''$ , we found 1905 matches between THOR and CORNISH. We selected unresolved sources with a THOR spectral index between 0 and  $-0.2$  (optically thin free-free emission has a spectral index  $-0.1$ ), which are detected in all six SPWs in THOR ( $\text{fit\_spws} = 6$ ). We selected 68 sources this way. We estimated the flux density at 5 GHz of these 68 sources according to their spectral indices from the THOR catalog. The extrapolated flux densities are very close to the flux densities in the CORNISH catalog as shown in Fig. 8. Sources with a spectral index measurement of between  $-0.09$  and  $-0.11$  (red in Fig. 8) are closer to ideal optically thin, and the extrapolated flux for these sources also agree better with those from CORNISH as expected.

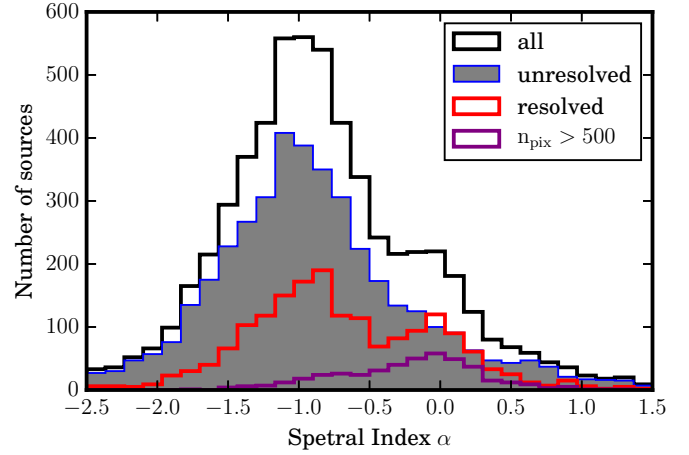


**Fig. 7.** Ratio of the MAGPIS and THOR flux density plotted against the THOR flux density. The points are colored according to their deviation from a flux ratio of unity in units of the uncertainty in the ratio, so the deviation =  $(1 - \text{ratio})/\sigma_{\text{ratio}}$ . The dashed line represents a one-to-one relation.



**Fig. 8.** Extrapolated flux densities at 5 GHz for selected sources according to their spectral indices from the THOR catalog plotted against the flux densities in the CORNISH catalog. Sources with a spectral index between 0 and  $-0.2$  are shown in blue, and those with a spectral index  $-0.09$  and  $-0.11$  are shown in red. The dashed line represents a one-to-one relation.

Furthermore, we also compared the THOR spectral indices with spectral indices Kalcheva et al. (2018) derived for the CORNISH UCH II regions. Kalcheva et al. (2018) used flux density measurements of CORNISH 5 GHz and MAGPIS 20 cm to derive the spectral indices. Eleven unresolved THOR sources are associated with the CORNISH UCH II regions and have a reliable spectral index measurement in Kalcheva et al. (2018). The comparison again reveals that the spectral indices from these two studies are tightly correlated.



**Fig. 9.** Histogram of the spectral index for all reliably detected sources ( $\text{fit\_spws} \geq 4$ ) with a reliable spectral index measurement ( $\sim 5857$  sources).

## 5.2. Spectral index

As described in Sect. 3, we derived spectral indices for 8228 sources, of which we consider the values for 5857 sources as reliable ( $\text{fit\_spws} \geq 4$ ). Using the spectral index information we can distinguish the physical origin of the emission and classify the continuum sources. Figure 9 shows the distribution of the spectral indices for all detected sources with a reliable spectral index measurement. For all sources the spectral index distribution shows a strong peak around  $\alpha \sim -1$ , and a secondary peak around  $\alpha \sim 0$ . If we consider only the unresolved sources, the spectral index distribution peaks around  $\alpha \sim -1$ , and the secondary peak around  $\alpha \sim 0$  diminishes. Most of the unresolved sources show a negative spectral index indicating that they are dominated by non-thermal synchrotron radiation. Considering the unresolved sources are also evenly distributed along Galactic longitude and latitude (Sect. 4), these unresolved sources with a negative spectral index are likely to be mostly extragalactic sources. The spectral distribution of the resolved sources shows two clear peaks around  $\alpha \sim -1$  and  $\alpha \sim 0$ . Most of the resolved sources with a flat or positive spectral index are Galactic H II regions (see Sect. 5.3). Those with negative spectral index are mostly SNRs (see Sect. 5.4) and radio galaxies (see Sect. 5.8), or overlapping unresolved sources classified as one single source. Considering that only the very large sources that have an area in pixels larger than 500 ( $n_{\text{pix}} > 500$ , effective radius  $\gtrsim 32''$ ), the spectral index distribution peaks around  $\alpha \sim 0$  and extends to  $\alpha \sim -1$ . Among these large sources, about 80% are associated with H II regions and the rest are classified as SNRs and radio galaxies (see Sect. 5.3, 5.4, and 5.8).

## 5.3. H II regions

Using data from the all-sky Wide-Field infrared Survey Explorer (WISE) satellite, Anderson et al. (2014) made the most complete catalog of H II regions to date with a total of more than 8000 sources<sup>10</sup>. Within the region of the THOR survey, the WISE H II catalog contains  $\sim 2400$  sources, and  $\sim 1500$  of them show radio continuum emission. The size of the H II regions varies from  $10''$  to  $20'$  from the mid-infrared (MIR) images, so multiple Galactic and extragalactic sources could easily be enclosed within one

<sup>10</sup> <http://astro.phys.wvu.edu/wise/>



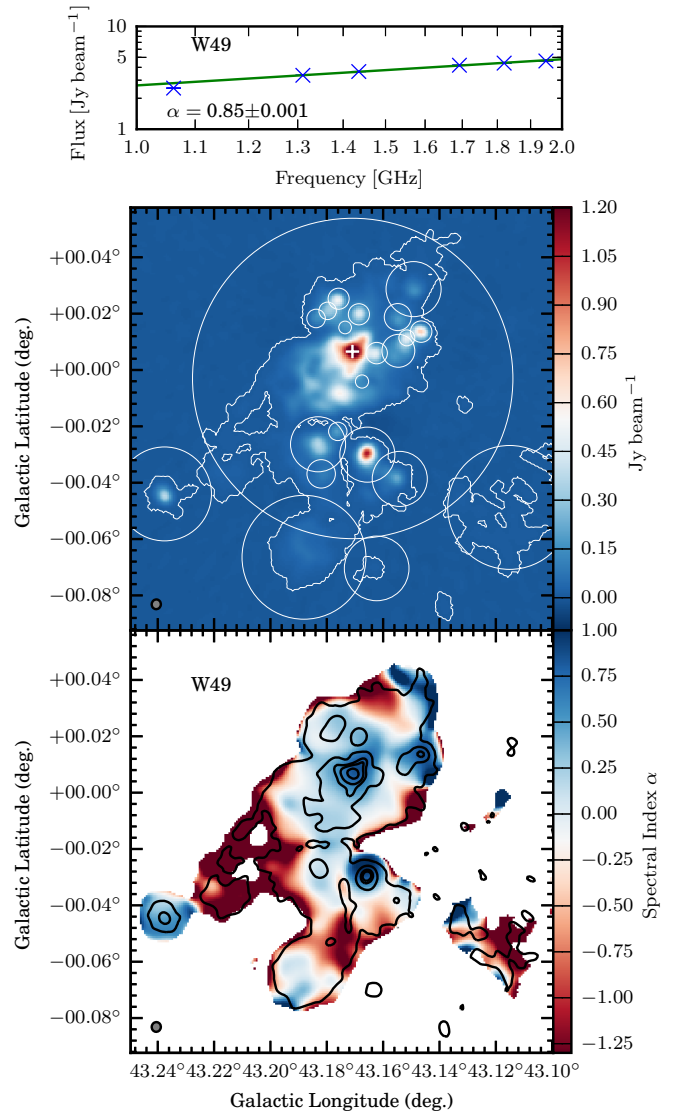
single large H II region. [Bühr et al. \(2016\)](#) showed that matching the THOR continuum sources with the WISE catalog sources with  $r < 150''$  in an automated fashion would produce less than 10% false matches. We take the same radius threshold when doing the automated matching, then we visually inspect the results and remove the false detections. We further visually compare the remaining large WISE sources ( $r > 150''$ ) with our continuum images, and identify the continuum sources that are associated with H II regions.

In addition to the WISE catalog, 239 UCH II regions are identified in the CORNISH survey ([Kalcheva et al. 2018](#)) and 205 lie within the THOR coverage. With a matching radius of the effective radius equal to each THOR continuum source, 202 UCH II regions have counterparts in the THOR survey. For sensitivity reasons, we do not detect three CORNISH UCH II regions (G024.1839+00.1199, G026.1094–00.0937, and G030.0096–00.2734; see [Kalcheva et al. 2018](#)). All the continuum sources that are associated with UCH II regions are also associated with at least one H II region in the WISE catalog except G26.008+0.137 and G37.735–0.113; therefore we list the CORNISH UCH II region counterparts for only these two continuum sources.

In total, we matched 713 continuum sources with H II regions. Among the matched H II regions, 16 are in the radio quiet group in the WISE catalog, which means no radio continuum emission is detected in the MAGPIS ([Helfand et al. 2006](#)) and VGPS ([Stil et al. 2006](#)) surveys. H II regions close to each other could be identified as one single source in our catalog (left panel, Fig. 5). In total 231 continuum sources are matched with more than one H II region. In particular, G43.171+0.007 is matched with 19 H II regions in W49, G19.610–0.235 is matched with 7 H II regions, G45.122+0.132 encompasses 6 H II regions, G48.610+0.027 encompasses 9 H II regions, G49.370–0.302 encompasses 8 H II regions (W51), and G49.488–0.380 encompasses 11 H II regions (W51). The radius of the matched H II regions measured at MIR in the WISE catalog varies from  $12''$  to  $20''$  with a median value of  $\sim 60''$ .

We show in Fig. 10 one of the extreme cases, G43.171+0.007, which is associated with 19 H II regions in W49. By comparing ATLASGAL and CORNISH surveys, [Urquhart et al. \(2013\)](#) identified 18 UCH II regions associated with this region and found that this region has the highest UCH II surface density in the first quadrant. The spectral index map of W49 (Fig. 10) reveals a positive or flat spectral index toward most of the area of the source, except the edge regions, where the spectral index fitting is not reliable owing to low S/N. This indicates that the H II region is dominated by thermal free-free emission. The spectral indices toward some strong continuum peaks are even larger than 0.5; this could indicate optically thick free-free emission.

To derive the physical properties of the H II regions, we fit the spectral energy distribution (SED) of the H II region sources with a simple homogeneous H II region model with optical depth to get the emission measure (EM) of the H II regions ([Sánchez-Monge 2011](#)). We selected continuum sources with a S/N larger than  $7\sigma$ ,  $\text{fit\_spws} = 6$  (see Sect. 5.2), and spectral index  $\alpha > -0.3$ . We further limited our fitting sample to sources with an effective radius smaller than  $60''$ , since tests performed by [Bühr et al. \(2016\)](#) have shown that we are able to recover sources with size up to  $\sim 120''$  reasonably well (80% flux recovery). Among 713 continuum sources that are matched with H II regions, 262 match our selection criteria and are fitted. We fit the peak flux of the sources assuming that the line-of-sight size of the sources are the same as the beam size ( $25''$ ); this allows us to get the EM and the electron density ( $n_e$ ) if the distance information is available



**Fig. 10.** Spectral index map for the H II region W49. *Top panel:* spectral index fitting result of the peak of the continuum source G43.171+0.007 (denoted with a cross in the *middle panel*). *Middle panel:* averaged image of spw-1440 and spw-1820, the white contours represent the area of the source extracted by BLOCAT, and the cross denotes the peak of the source G43.171+0.007 in the catalog. The circles indicate the H II regions from [Anderson et al. \(2014\)](#) matched with the continuum sources in the THOR catalog. *Bottom panel:* the spectral index map produced by fitting the flux of the six SPWs pixel by pixel. The synthesized beams of the averaged image and the spectral index map are shown in the bottom left corner of each panel.

in the WISE catalog ([Anderson et al. 2014](#)). For 168 sources we got a good fit to the model and list the fitting results in Table 4. The main uncertainties of the fitting results are from the uncertainties of the peak flux brought in by the flux calibrator ( $\sim 5\%$  at these wavelengths), uncertainties from the fitting procedure ( $< 10\%$ ), and the uncertainties of the sizes of the sources on the line of sight. Two sources have  $T_e$  measurements from previous RRLs observations ([Balsler et al. 2011](#)), and we assume a  $T_e$  of 8000 K for the remaining sources; the mean  $T_e$  estimated by [Balsler et al. \(2011\)](#) is  $\sim 8000$  K for H II regions in the THOR survey area. For 151 sources we fitted an  $10^4 < \text{EM} < 10^5 \text{ cm}^{-6} \text{ pc}$ . For 124 sources there is distance information in the WISE catalog, thus we estimated  $n_e$ , which is between  $0.9 \times 10^2$  and  $5.4 \times 10^2 \text{ cm}^{-3}$ .

**Table 4.** Fitting results for H II regions.

Gal.ID	$\alpha$	$\Delta\alpha$	H II name	$T_e^a$ (K)	$d^b$ (kpc)	EM ( $\times 10^5 \text{ cm}^{-6} \text{ pc}$ )	$n_e^b$ ( $\times 10^2 \text{ cm}^{-3}$ )
G52.753+0.334	0.13	0.01	G052.750+00.334	8970	9.575	2.0	5.0
G53.187+0.209	-0.14	0.02	G053.188+00.209	-	9.96	0.7	2.9
G56.160+0.077	-0.21	0.04	G056.153+00.076	-	9.9	0.2	1.7
G56.420+0.423	-0.12	0.06	G056.412+00.423	-	9.93	0.2	1.6
G57.547-0.272	-0.05	0.01	G057.541-00.279	-	8.805	1.3	4.2
G58.773+0.646	-0.10	0.04	G058.769+00.648	-	4.405	0.2	2.5
G60.883-0.130	0.01	0.02	G060.881-00.135	7463	-	1.4	-

**Notes.** <sup>(a)</sup>  $T_e$  is assumed to be 8000 K if it is not available from the WISE catalog. <sup>(b)</sup> We calculate  $n_e$  if distance is available from the WISE catalog. The full table is available at the CDS.

Continuum source G49.477-0.328, which is associated with the H II region G049.490-00.381 in W51, has the highest value for EM and  $n_e$  from our fitting, which are  $4.2 \times 10^5 \text{ cm}^{-6} \text{ pc}$  and  $3.1 \times 10^4 \text{ cm}^{-3}$ , respectively.

Among the 168 sources for which we can get a good H II region model fit, 39 are also associated with CORNISH UCH II regions. Assuming homogeneous optically thin and the line-of-sight size is the same as the angular size, Kalcheva et al. (2018) calculated EM and  $n_e$  for the CORNISH UCH II regions. Since CORNISH is at 5 GHz and the angular sizes of the 39 UCH II regions they derived are all smaller than  $12''$ , which is about a half beam size of THOR, we cannot compare the EM and  $n_e$  from the two samples directly. If we assume all 39 UCH II regions have a size of  $25''$ , and convert the EM and  $n_e$  from the CORNISH observations accordingly, these values are close to those derived with the THOR observations; however they have a large scatter. We can fit the  $\text{EM}_{\text{CORNISH}}$  versus  $\text{EM}_{\text{THOR}}$  and  $n_{e\text{CORNISH}}$  versus  $n_{e\text{THOR}}$  plots with a linear function  $y = x * 0.8 + c$ . This is a very rough comparison, but shows our H II fitting procedure is correct.

#### 5.4. Supernova remnants

Green (2014) provided the most complete catalog of Galactic SNRs with 294 sources, 67 of which lie, or partially lie, in our survey area. By visually comparing the catalog with our continuum images, we identified 92 continuum sources associated with 36 SNRs. As shown in Fig. 5, many of the SNRs are resolved into multiple sources by the source-finding algorithm. The rest of the SNRs from Green (2014) either have too weak radio continuum emission, which is below our sensitivity, or are too diffuse and are filtered out by the VLA C-configuration (see also Bihl et al. 2016). We marked all the matched continuum sources with “SNR\_green” in the catalog and list the corresponding ID of the SNRs from Green (2014).

By studying the compact and extended THOR+VGPS 1.4 GHz continuum emission (in the region  $l > 17.5^\circ$ ), Anderson et al. (2017) confirmed the radio emission for 52 SNRs from Green (2014). Anderson et al. (2017) found that 6 of the SNRs from the Green (2014) catalog (G20.4+0.1, G21.5 0.1, G23.6+0.3, G54.1+0.3, G59.8+1.2, and G065.8 0.5) are confused with H II regions and the radio emission appears to be thermal. Figure 11 shows the spectral index fitting result and the spectral index map of SNR W49B as an example, indicating that the region is dominated by negative spectral index with some variation, and further indicating non-thermal synchrotron emission.

By comparing the large scale diffuse radio continuum emission traced by the combined THOR+VGPS 1.4 GHz continuum data with the MIR *Spitzer* GLIMPSE  $8.0 \mu\text{m}$  (Benjamin et al. 2003; Churchwell et al. 2009) and MIPS GAL  $24 \mu\text{m}$  (Carey et al. 2009) data, Anderson et al. (2017) identified 76 new SNR candidates. Since the radio continuum emission from most of the new SNR candidates is weak and diffuse, we could only detect 13 of these candidates in our continuum catalog, which uses only THOR C-configuration data, and hence do not trace the large scale diffuse emission. Among the new SNR candidates, G17.80-0.02, G26.75+0.73, and G27.06+0.04 are matched with 2 continuum sources each in our catalog, and G51.21+0.11 is matched with 6 continuum sources. We marked all the matched continuum sources with “SNR\_anderson” in the catalog and list the corresponding ID of the SNRs from Anderson et al. (2017).

The MAGPIS survey (Helfand et al. 2006) identified many SNR candidates, and 33 of these are covered by our THOR survey. Anderson et al. (2017) found that 17 MAGPIS SNR candidates (G18.2536-0.3083, G19.4611+0.1444, G19.5800-0.2400, G19.5917+0.0250, G19.6100-0.1200, G19.6600-0.2200, G21.6417+0.0000, G22.7583-0.49171, G22.9917-0.3583, G23.5667-0.0333, G24.1803+0.2167, G25.2222+0.2917, G29.0667-0.6750, G30.8486+0.1333, G31.0583+0.4833, G31.6097+0.3347, and G31.8208-0.1222.) are spatially coincident with a known H II region from the WISE catalog. G18.2536-0.3083 is also reported as a known H II region by Bihl et al. (2016). Furthermore, G16.3583-0.1833 and G17.3361-0.1389 are spatially coincident with known H II regions G016.360-00.211 and G017.336-00.146 from the WISE catalog. G29.0778+0.4542 is a known PN (PNG029.0+00.4; see also Anderson et al. 2017). For 10 MAGPIS SNRs (Helfand et al. 2006) we found matched continuum sources in our catalog, however, these continuum sources are also matched with SNRs from Green (2014) or candidates from Anderson et al. (2017) and we do not mark them separately in the catalog. For 3 MAGPIS SNRs we do not find matched continuum sources owing to THOR sensitivity and the missing flux problem (see also Bihl et al. 2016).

#### 5.5. Planetary nebulae

The Hong Kong/AAO/Strasbourg H $\alpha$  PN database (HASH, Parker et al. 2016) provides up-to date information for all known Galactic PNe. In the HASH database, there are 234 PNe with the PN status marked as T (True PN), L (Likely PN), and P (Possible PN) within our survey area. We detected 164 in our catalog, among which 75 are true PN, 60 are likely PN, and 29 are possible



PN. We marked them as “PN” in our catalog, and list the HASH ID (PNG). In particular PNG029.2+00.0 is associated with the continuum source G29.211–0.069, the extended emission traces the known H II region G029.165–00.035. Thus we indicate the continuum source G29.211–0.069 as “HII;PN” and list both the PN and H II IDs. Furthermore, 90 of the matched PNe do not have radio emission information at 20 cm in the database; our survey provides this important information. We list all the PNe detected in the THOR survey in Table D.1. For the remaining 74 sources the peak flux at spw-1440 from THOR observations agree with the radio flux at 20 cm from the database in general and have a median flux difference of 31% relative to those in the HASH database. Since we are comparing flux density in the HASH database with the THOR peak flux, the large difference is expected.

In addition to the 164 detected PNe we include in our catalog, PNG 014.5+00.0, 017.4+00.3, and 018.7+00.0 are also detected in our observations. However, the continuum sources that these PNe are associated with are known H II regions (G014.598+00.019, G017.414+00.377, and G018.710+00.000). Since these 3 PNe are all possible PN, we did not include them in our catalog.

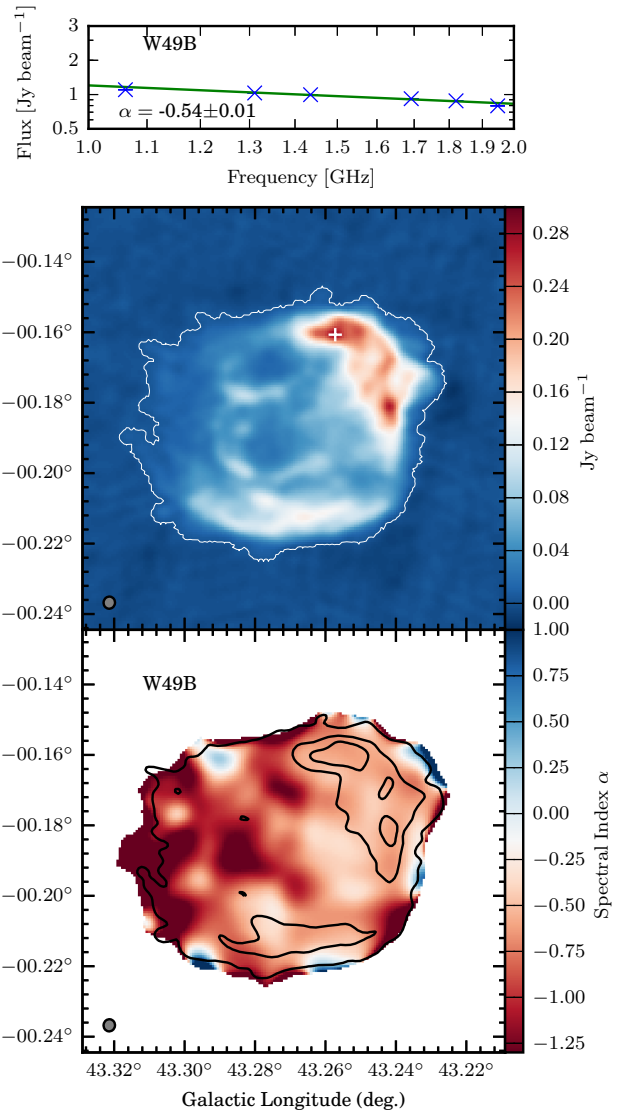
We did not detect the remaining 67 PNe, most likely for sensitivity reasons. Only 4 of the 67 PNe have 1.4 GHz radio flux information in the HASH catalog. The 1.4 GHz flux density of PNG029.8+00.5 in the HASH catalog is 33 mJy, however, we did not detect any radio counterpart in our THOR-only nor THOR+VGPS data. Bojičić et al. (2011) and Luo et al. (2005) also reported the radio detection for this PN as suspect. The 1.4 GHz flux of PNG028.7+00.7, 044.9+00.0, and 056.1–00.4 in the HASH catalog is 2.7, 3.5, and 6.6 mJy, respectively.

## 5.6. Pulsars

The ATNF Pulsar Catalogue<sup>11</sup> (Manchester et al. 2005) provides the most complete catalog of all published rotation-powered pulsars. Within our survey region, the catalog contains 335 pulsars. We cross-matched the pulsar catalog with the THOR continuum catalog taking into account the position uncertainty from the pulsar catalog. We matched 38 THOR continuum sources with pulsars, denoted these as “PSR” in the continuum catalog, and list the corresponding pulsar names. Except for G38.163–0.151, all matches have a separation smaller than 7.5”. Considering the synthesized beam size of our observation is  $\sim 12'' - 18''$ , these matches are reliable. G38.163–0.151 is matched with J1901+0435 with a separation of 15”, however, J1901+0435 has a relatively large position uncertainty of 10”, which we consider a good match. We list the matched continuum sources and pulsars in Table E.1.

Among all the pulsars detected in our survey, J1841–0500 is an extremely intermittent pulsar (Camilo et al. 2012) and has no 1.4 GHz radio flux information in the ATNF pulsar catalog. We detected a radio counterpart in our observation with a  $S/N \sim 6$  (G27.322–0.033).

We did not detect the remaining 297 pulsars in our catalog, which is mainly because of the low sensitivity in some sections of the maps. Among the non-detected pulsars, 247 have mean 1.4 GHz radio flux densities in the ATNF pulsar catalog, and their mean flux densities are all below 3 mJy, with a median value of 0.3 mJy. In comparison, the detected pulsars have a median mean flux density of 1.7 mJy from the ATNF catalog.



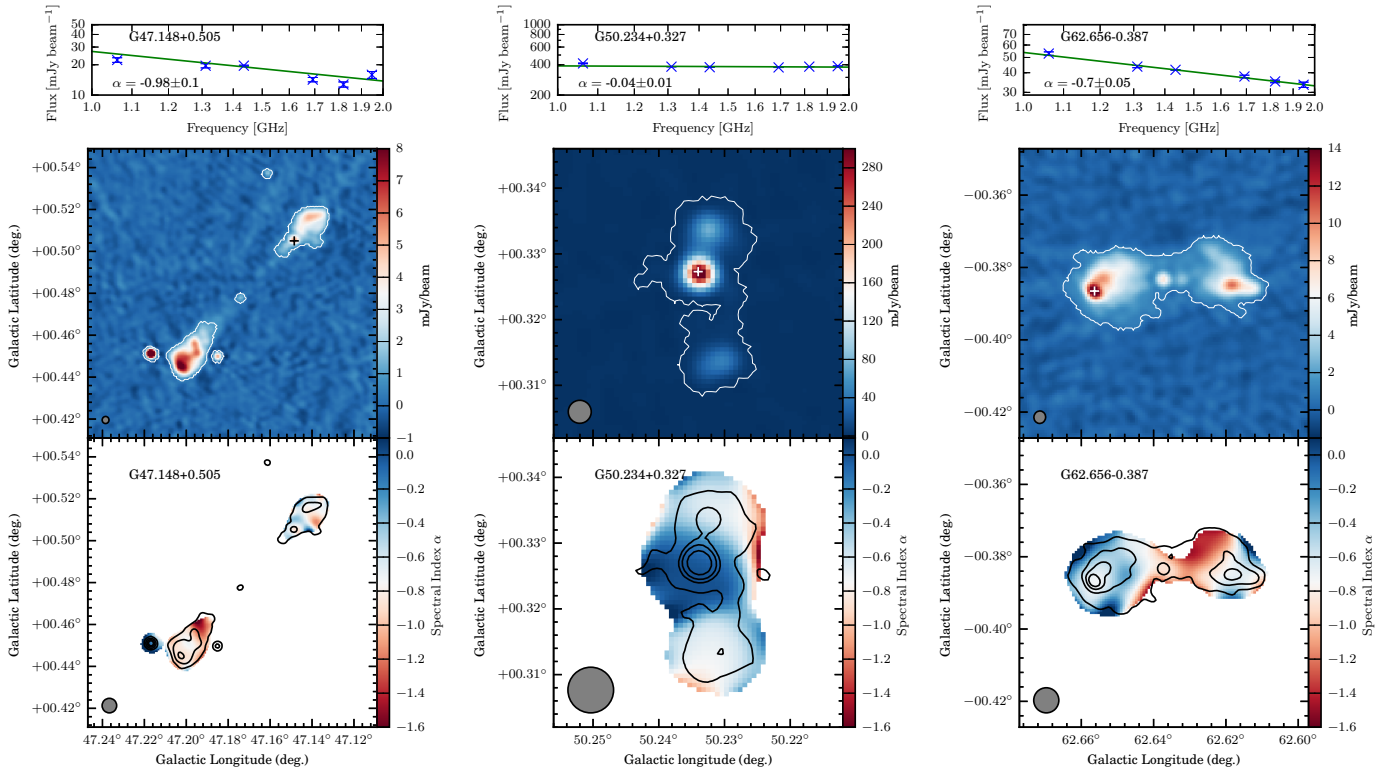
**Fig. 11.** Spectral index map for SNR W49B. *Top panel:* spectral index fitting result of the peak of the continuum source G43.257–0.161. *Middle panel:* averaged image of spw-1440 and spw-1820, the white contours represent the area of the source extracted by BLOBCAT, and the cross denotes the peak of the source G43.257–0.161 in the catalog. *Bottom panel:* the spectral index map produced by fitting the flux of the 6 SPWs pixel by pixel. The synthesized beams of the averaged image and the spectral index map are shown in the bottom left corner of each panel.

In general, the peak flux at spw-1440 from THOR observations are in agreement with the radio flux at 1.4 GHz in the ATNF catalog and have a median flux difference of 30% relative to those in the ATNF catalog.

## 5.7. X-ray sources

While diffuse radio and X-ray emission can trace H II regions (free-free emission and stellar wind shocks; Silich et al. 2005) and SNRs (e.g., Decourchelle et al. 2005), the compact emission usually traces pulsar wind nebulae (e.g., Brisken et al. 2005; Miller et al. 2005), XRBs or microquasars (Mirabel & Rodríguez 1998, 1999), or AGNs (e.g., Bridle & Perley 1984; Harris & Krawczynski 2006).

<sup>11</sup> <http://www.atnf.csiro.au/research/pulsar/psrcat>



**Fig. 12.** Spectral index maps for three “jet” sources. *Top panels:* spectral indices fitting results of the peak positions. *Middle panels:* averaged images of spw-1440 and spw-1820, the white contours represent the area of the sources extracted by BLOBCAT, and the crosses denote the peaks of the sources in the catalog. *Bottom panels:* the spectral index map produced by fitting the flux of the 6 SPWs pixel by pixel. The synthesized beams of the averaged image and spectral index map are shown in the bottom left corner of each panel.

We cross-matched our continuum catalog with three X-ray source catalogs as follows: 1SXPS *SWIFT* X-ray telescope point source catalog (Evans et al. 2014), *XMM-Newton* Serendipitous Source Catalog (3XMM-DR7 Version; Watson et al. 2009; Rosen et al. 2016), and Chandra Source Catalog (CSC, v1.1; Evans et al. 2010). Within our survey area, 1SXPS has  $\sim 2800$  sources, CSC has  $\sim 3900$  sources, and 3XMM has  $\sim 11\,500$  sources. With a matching radius of  $10''$ , we found that 79 of the remaining  $\sim 9300$  THOR sources are associated with X-ray sources (see Table F.1). Among the 79 X-ray sources we detected, 43 do not have a radio counterpart within a radius of  $15''$  in the SIMBAD Astronomical Database<sup>12</sup> or the NASA/IPAC Extragalactic Database (NED)<sup>13</sup>. Sixty-five of the X-ray sources are unresolved and the remaining resolved sources are also relatively compact with an effective radius  $< 29''$ . In particular, continuum source G45.366–0.219 is associated with the microquasar GRS1915+105 (Mirabel & Rodríguez 1999). Further H I absorption studies toward these sources would allow us to identify which ones are Galactic. By investigating the X-ray and radio flux ratios, the spectral indices and observations at other (optical/infrared) wavelengths of the Galactic sources in detail, we can further constrain the type of the sources, i.e., low mass XRB, PN, pulsar etc. (e.g., Sequist 1993; Maccarone et al. 2012; Tetarenko et al. 2016).

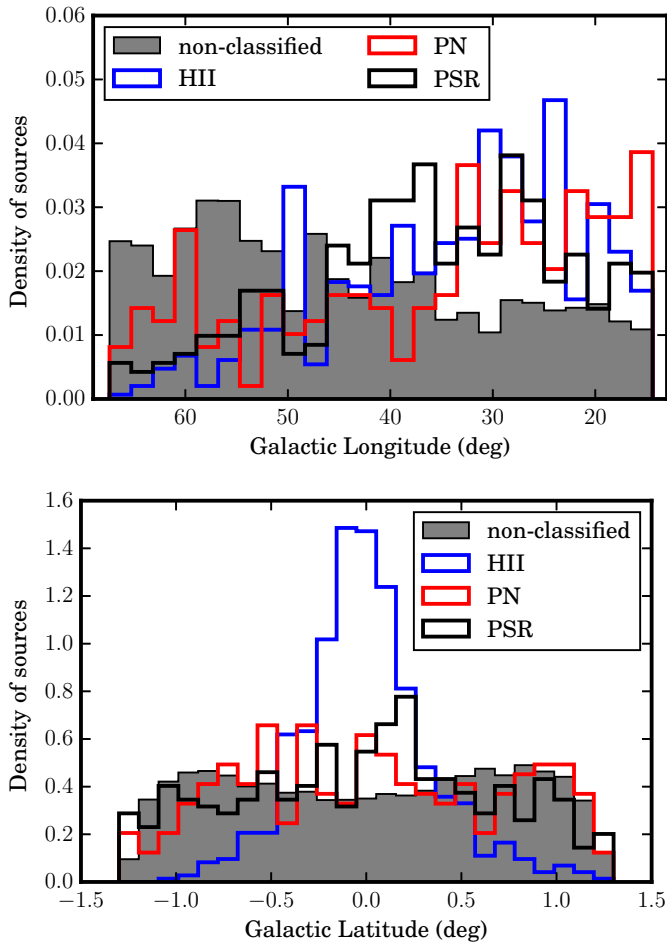
### 5.8. Extragalactic radio sources

About 9300 sources in our catalog are not classified. Taking a matching radius of  $15''$ , which is the average size of the synthesized beam of the averaged images used for source extraction, more than 7750 sources do not match to anything in SIMBAD. For the matched sources, about 84% are matched to only one or more radio sources. With the same matching radius ( $15''$ ) in the NED database,  $\sim 3350$  of the sources are matched to one or more infrared sources,  $\sim 2140$  of the sources are matched to one or more radio sources, and more than 3760 sources do not have any counterparts within a radius of  $15''$ . This means that for  $\sim 9000$  sources detected in our survey, we do not know exactly what they are other than that they have radio and/or infrared emission.

As we mentioned in Sect. 5.2, aside from the H II regions, SNRs, and PNe, the majority of the sources we detected are actually extragalactic. Many of the those sources are also resolved and show bipolar radio lobe structures. We checked all the resolved sources with a negative or flat spectral index in our catalog by eye, identified  $\sim 300$  sources that show clear bipolar jet structure, and marked these as “jet” in the catalog. For these jet sources, we can construct the spectral index maps, which could be used to estimate the source expansion velocity when combined with magnetic field strength information. Since the identification of these jet sources is done morphologically, two partially overlapped sources could also be categorised into jet sources. Since we do not have zero-spacing information, we filtered out large scale structures in our observations. Bühr et al. (2016) showed that the THOR observations are able to recover sources with sizes up to  $\sim 120''$  reasonably well ( $\geq 80\%$  flux recovery);

<sup>12</sup> <http://simbad.u-strasbg.fr/simbad/>

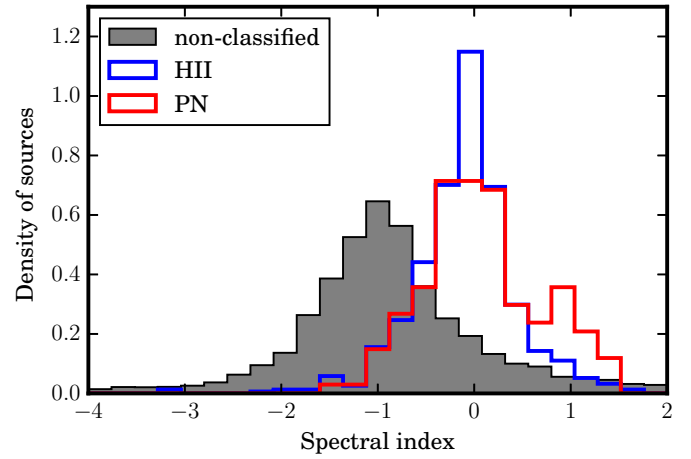
<sup>13</sup> <https://ned.ipac.caltech.edu/>



**Fig. 13.** Normalized distribution of different types of objects along Galactic longitude (*top panel*) and latitude (*bottom panel*) for the non-classified sources, H II regions, PNe, and pulsars. For H II regions we plot only the sources associated with the THOR continuum sources. For PNe and pulsars, we plot all that lie within our survey area.

spectral index maps for sources larger than that should be interpreted with caution. Figure 12 shows the spectral index maps of three jet sources. As the figure shows, the spectral index varies within the source, indicating that the optical depth of the synchrotron emission varies or possible thermal emission exists in different parts of the radio lobes.

In Sect. 5.2 we mentioned that the spatial distribution and spectral index distribution of the unresolved sources indicate the majority are extragalactic sources. To further confirm this, we compare the normalized spatial distribution and spectral index distribution of the non-classified sources to the Galactic sources we identified. Figure 13 compares the normalized distribution along Galactic longitude and latitude of those non-classified sources with the Galactic objects (H II regions, PNe, and pulsars). The normalized distribution along Galactic longitude (*top-panel*, Fig. 13) shows that the Galactic objects are more concentrated in the lower longitude region, while more non-classified sources are detected in the higher longitude region. The distribution along Galactic latitude (*top panel*, Fig. 13) shows that the H II regions are concentrated very close to the Galactic midplane. Although not as much as the H II regions, the PNe and pulsars are also concentrated close to the midplane. In contrast, more non-classified sources are found in regions  $|b| > 0.5^\circ$ . This distribution



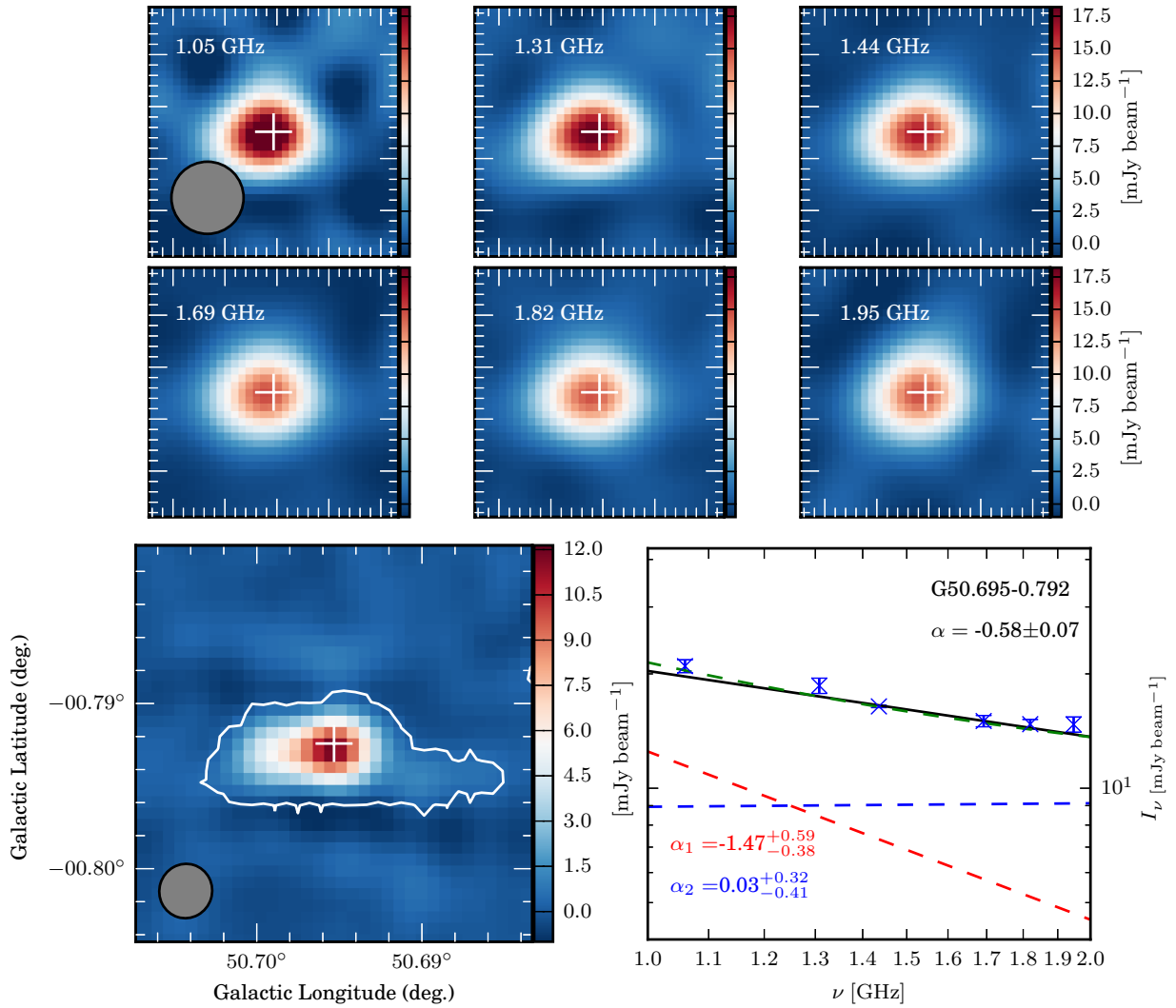
**Fig. 14.** Normalized spectral index distribution of the non-classified sources, H II regions, and PNe.

difference confirms that the non-classified sources are of mostly extragalactic origin. Furthermore, the spectral index distribution of the non-classified sources also shows clear differences from the Galactic sources and peaks around  $\alpha \sim -1$  (Fig. 14), but many of these non-classified sources still show a flat SED ( $\alpha \geq 0$ ), which could be Galactic compact H II regions that are not listed in the WISE H II catalog. We classify the  $\sim 5300$  sources with a negative spectral index  $\alpha < -0.3$  as extragalactic source candidates, among which  $\sim 3970$  sources have a reliable spectral index ( $\text{fit\_spws} \geq 4$ ).

Extragalactic radio sources often consist of a core and one or more radio lobes, which show different spectral profiles. The core dominates the emission at shorter wavelengths and shows a close to flat or positive spectral index, while the jet dominates at longer wavelengths and shows negative spectral index (e.g., Hey 1971, chap. 9). This transition in the spectral profile happens around  $\sim 10\text{--}20$  cm. Assuming the emission of the core and jet at 1–2 GHz can both be described with one single power law, then the total flux  $I(\nu)$  is proportional to  $(c_1\nu^{\alpha_1} + c_2\nu^{\alpha_2})$ , where  $\alpha_1$  and  $\alpha_2$  are the spectral indices of the jet and core, respectively, and  $c_1$  and  $c_2$  are constants. We used the Markov chain Monte Carlo method (MCMC) to fit the extragalactic source candidates that have a S/N larger than 50 with the two spectral indices using the *emcee* package (Foreman-Mackey et al. 2013). Then we selected the candidates that meet the following criteria for a good fit: first, the reduced  $\chi^2$  of the fitting of two spectral indices is smaller than that with single spectral index fitting; second, the spectra of the two components cross with each other within our frequency coverage (1.05–1.95 GHz, such as Fig. 15). In total, we can derive a good fit with two spectral indices for 135 continuum sources.

We performed an *F*-test (e.g., Phillips 1982; Lomax & Hahs-Vaughn 2013) to compare the two components fitting to the one power-law fitting, and calculated the probability values (*p*-value) for all 135 sources. The *p*-values are all above 0.28, therefore the two components fitting is not significantly better than the simple one power-law fitting. However, the two components fitting results still provide alternative insight for those sources. As shown in Fig. 15, the peak fluxes of G50.695–0.792 can be fitted with two components with a spectral indices of  $-1.47$  and  $0.03$ , respectively, which could trace the radio jet and core, respectively. The averaged image in Fig. 15 shows G50.695–0.792 is resolved with an elongated structure, which might trace the jet.





**Fig. 15.** One example source G50.695–0.792 fitted with two indices. The *top two panels* show each SPW separately. The *bottom left panel* represents the averaged image of spw-1440 and spw-1820, which we used for the source extraction (see Sect. 3). The white contours show the extent of the source determined by the BLOCAT algorithm. The cross in each panel marks the peak position, which we used to determine the spectral index. The *bottom right panel* presents the peak intensity for each SPW and corresponding one single spectral index fitting (black solid line) and two spectral indices fitting (green dashed lines) from two components (red and blue dashed lines).

**Table 5.** Summary of different types of sources in the catalog.

Source types	Number of continuum sources
H II regions	713
SNRs	92(+21)
PNe	164
Pulsars	38 (+663)
X-ray sources	79
Extragalactic jets	299
USS	699

**Notes.** USS stands for sources with ultra steep spectra ( $\alpha \leq -1.3$ ). The numbers of the candidates are in brackets.

Radio sources with ultra steep spectra (USS;  $\alpha \leq -1.3$ ) are efficient tracers of high-redshift radio galaxies, since radio sources can be detected uniformly over all redshift ranges and do not suffer dust extinction at high redshifts (e.g., Chambers et al. 1996; Hughes et al. 1997; Ivison et al. 1998; De Breuck et al.

2000). De Breuck et al. (2000) found a trend that steeper spectral index sources have higher redshifts, and 50% of the 4C USS sample (Chambers et al. 1996) are  $z > 2$  sources. This  $z - \alpha$  correlation is considered to be a combined contribution of a K-correction and an increasing spectral curvature with  $z$  of a radio spectrum (Krolik & Chen 1991; Carilli et al. 1999; van Breugel et al. 1999).

In our continuum catalog, we have  $\sim 2170$  sources that have an spectral index steeper than  $-1.3$ , which is our base sample of USS sources. De Breuck et al. (2000) further pointed out that 85% USS with X-ray detections are in galaxy clusters, so we chose those without X-ray emission. Furthermore, we selected sources with a reliable spectral index determination ( $\text{fit\_spws} \geq 4$ ). This selection results in 1362 sources that have a good spectral index determination and have a spectral index steeper than  $-1.3$ . Of these source 663 have a spectral index steeper than  $-1.6$  and could be Galactic pulsars (De Breuck et al. 2000). The remaining 699 USS sources could be high-redshift radio galaxies; further spectroscopic observations are needed to confirm this.

## 6. Conclusions

We observed a large portion of the first Galactic quadrant ( $l = 14.0 - 67.4^\circ$ ,  $|b| \leq 1.25^\circ$ ) using the VLA in C-configuration and achieved a spatial resolution of  $\sim 10 - 25''$  at 1 to 2 GHz with the THOR Galactic plane survey. In this paper, we present the catalog of the continuum sources from the whole survey. We summarise numbers of different types of sources in the catalog in Table 5 and the main results below.

1. The catalog contains 10387 sources we extracted with the BLOBCAT software after removing the obvious observational side-lobe artifacts. About 72% (7521 sources) of the extracted sources are detected at a significance higher than  $7\sigma$  and  $\sim 79\%$  are unresolved. The catalog is complete to at least 94% above the  $7\sigma$  detection limit. The noise of our data is dominated by side-lobe noise and varies spatially, although more than 60% of the observed area has a noise level of  $7\sigma \lesssim 2 \text{ mJy beam}^{-1}$ . We extracted the peak intensity of the 6 usable SPWs between 1 to 2 GHz, and we are able to determine a reliable spectral index (spectral index fitted with at least 4 SPWs) for 5657 sources.
2. We cross-matched the THOR catalog with the WISE H II region catalog and found 713 continuum sources are associated with H II regions. Among the matched H II regions, 16 are in the radio quiet group in the WISE catalog, which means they did not previously have radio continuum detected. We find that 231 continuum sources are associated with more than one H II region. The spectral index distribution shows a single peak around  $\alpha = 0$ , indicating thermal free-free emission. For 168 sources we fit the SED with a simple homogeneous H II region model and derive the EM and the electron density ( $n_e$ ) where the distance information is available in the WISE catalog.
3. Although the diffuse emission from many of the large scale SNRs is filtered out by our interferometric observations, we identified 92 continuum sources associated with 39 SNRs from the SNR catalog by Green (2014). Thirteen of the new SNR candidates from Anderson et al. (2017) are detected in our continuum catalog.
4. By cross-matching the THOR catalog with the HASH database, we detected 164 PNe in our continuum catalog. As 90 of these PNe do not have radio emission information at 20 cm in the database, our survey provides this important information in Table D.1. The spectral index distribution is similar to that of the H II regions and shows a single peak around  $\alpha = 0$ , indicating thermal free-free emission.
5. We cross-matched the THOR catalog with the ATNF Pulsar Catalog and found 38 counterparts. One extremely intermittent pulsar J1841–0500 is also detected in our catalog. We find that 663 sources with a spectral index  $\alpha < -1.6$  could be Galactic pulsar candidates.
6. We cross-matched the THOR catalog with X-ray source catalogs 1SXPS, 3XMM-DR7 and CSC and found 79 overlaps. Twelve of these have a spectral index steeper than  $-1.3$  and could be galaxy clusters. Forty-three do not have previous known radio counterparts within a radius of  $15''$  on SIMBAD or NED.
7. About 300 sources show clear structure of bipolar jets; we denote these as jets in the catalog and construct spectral index maps. We identified 699 USS sources and these could be high-redshifted radio galaxies ( $-1.3 > \alpha > -1.6$ ). Further spectroscopic observations are needed to confirm this.
8. About 9000 sources in our catalog are not classified specifically. They are likely to be extragalactic background sources.

More than 7750 sources do not have counterparts in the SIMBAD Astronomical Database and more than 3760 sources do not have counterparts in the NED.

With the THOR continuum catalog, we provide a rich dataset to the community. All the fits images and catalogs can be downloaded from the project website<sup>14</sup>. With the follow-up observations of particular sources, such as absorption study of the extragalactic sources, or by combining with other existing Galactic plane surveys<sup>15</sup>, we can study the structure of the Milky Way and the ISM in different phases.

*Acknowledgements.* The National Radio Astronomy Observatory is a facility of the National Science Foundation operated under cooperative agreement by Associated Universities, Inc. Y. W., H. B., S. B., and J. D. S. acknowledge support from the European Research Council under the Horizon 2020 Framework Program via the ERC Consolidator Grant CSF-648505, and RSK via the ERC Advanced Grant 339177 (STARLIGHT). H.B. and M.R. acknowledge support from the Deutsche Forschungsgemeinschaft in the Collaborative Research Center (SFB 881) “The Milky Way 74 System” (subproject B1, B2, B8), and from the Priority Program SPP 1573 “Physics of the Interstellar Medium” (grant numbers KL 1358/18.1, KL 1358/19.2). F.B. acknowledges funding from the European Union’s Horizon 2020 research and innovation programme (grant agreement No 726384). The authors thank J. Mottram, M. Founesneau and K. Meisenheimer for productive and fruitful discussions. This research made use of Astropy and affiliated packages, a community-developed core Python package for Astronomy (Astropy Collaboration 2018), Python package SciPy, APLpy, an open-source plotting package for Python (Robitaille & Bressert 2012), and software TOPCAT (Taylor 2005).

## References

- Aguirre, J. E., Ginsburg, A. G., Dunham, M. K., et al. 2011, *ApJS*, 192, 4
- Anderson, L. D., Bania, T. M., Balser, D. S., et al. 2014, *ApJS*, 212, 1
- Anderson, L. D., Wang, Y., Bihr, S., et al. 2017, *A&A*, 605, A58
- Astropy Collaboration, Price-Whelan, A. M., & Sipőcz, B. M. 2018, *AJ*, 156, 123
- Balser, D. S., Rood, R. T., Bania, T. M., & Anderson, L. D. 2011, *ApJ*, 738, 27
- Benjamin, R. A., Churchwell, E., Babler, B. L., et al. 2003, *PASP*, 115, 953
- Beuther, H., Bihr, S., Rugel, M., et al. 2016, *A&A*, 595, A32
- Bhatnagar, S., Rau, U., Green, D. A., & Rupen, M. P. 2011, *ApJ*, 739, L20
- Bihr, S., Beuther, H., Ott, J., et al. 2015, *A&A*, 580, A112
- Bihr, S., Johnston, K. G., Beuther, H., et al. 2016, *A&A*, 588, A97
- Bojičić, I. S., Parker, Q. A., Filipović, M. D., & Frew, D. J. 2011, *MNRAS*, 412, 223
- Bridle, A. H., & Perley, R. A. 1984, *ARA&A*, 22, 319
- Briskin, W. F., Romani, R. W., & Ng, C. Y. 2005, in *X-Ray and Radio Connections*, eds. L. O. Sjouwerman, & K. K. Dyer, 5.04
- Camilo, F., Ransom, S. M., Chatterjee, S., Johnston, S., & Demorest, P. 2012, *ApJ*, 746, 63
- Carey, S. J., Noriega-Crespo, A., Mizuno, D. R., et al. 2009, *PASP*, 121, 76
- Carilli, C. L., Röttgering, H. J. A., Miley, G. K., Pentericci, L. H., & Harris, D. E. 1999, in *The Most Distant Radio Galaxies*, eds. H. J. A. Röttgering, P. N. Best, & M. D. Lehnert
- Chambers, K. C., Miley, G. K., van Breugel, W. J. M., & Huang, J.-S. 1996, *ApJS*, 106, 215
- Churchwell, E., Babler, B. L., Meade, M. R., et al. 2009, *PASP*, 121, 213
- Condon, J. J. 1992, *ARA&A*, 30, 575
- Condon, J. J., Cotton, W. D., Greisen, E. W., et al. 1998, *AJ*, 115, 1693
- Csengeri, T., Urquhart, J. S., Schuller, F., et al. 2014, *A&A*, 565, A75
- De Bruck, C., van Breugel, W., Röttgering, H. J. A., & Miley, G. 2000, *A&AS*, 143, 303
- Decourchelle, A. 2005, in *X-Ray and Radio Connections*, eds. L. O. Sjouwerman, & K. K. Dyer, 4.02
- Evans, I. N., Primini, F. A., Glotfelty, K. J., et al. 2010, *ApJS*, 189, 37
- Evans, P. A., Osborne, J. P., Beardmore, A. P., et al. 2014, *ApJS*, 210, 8
- Foreman-Mackey, D., Hogg, D. W., Lang, D., & Goodman, J. 2013, *PASP*, 125, 306
- Green, D. A. 2014, *Bull. Astron. Soc. India*, 42, 47
- Grobler, T. L., Nunhokee, C. D., Smirnov, O. M., van Zyl, A. J., & de Bruyn, A. G. 2014, *MNRAS*, 439, 4030
- Hales, C. A., Murphy, T., Curran, J. R., et al. 2012, *MNRAS*, 425, 979

<sup>14</sup> <http://www.mpia.de/thor/Overview.html>

<sup>15</sup> <https://www.scipy.org/>

- Harris, D. E., & Krawczynski, H. 2006, *ARA&A*, 44, 463
- Helfand, D. J., Becker, R. H., White, R. L., Fallon, A., & Tuttle, S. 2006, *AJ*, 131, 2525
- Hey, J. S. 1971, The radio universe
- Hoare, M. G., Purcell, C. R., Churchwell, E. B., et al. 2012, *PASP*, 124, 939
- Hughes, D. H., Dunlop, J. S., & Rawlings, S. 1997, *MNRAS*, 289, 766
- Ivison, R. J., Dunlop, J. S., Hughes, D. H., et al. 1998, *ApJ*, 494, 211
- Kalcheva, I. E., Hoare, M. G., Urquhart, J. S., et al. 2018, *A&A*, 615, A103
- Keto, E. 2003, *ApJ*, 599, 1196
- Krolik, J. H., & Chen, W. 1991, *AJ*, 102, 1659
- Lomax, R., & Hahs-Vaughn, D. 2013, *Statistical Concepts : A Second Course* (Taylor & Francis)
- Lucas, P. W., Hoare, M. G., Longmore, A., et al. 2008, *MNRAS*, 391, 136
- Luo, S. G., Condon, J. J., & Yin, Q. F. 2005, *ApJS*, 159, 282
- Maccarone, T. J., Torres, M. A. P., Britt, C. T., et al. 2012, *MNRAS*, 426, 3057
- Manchester, R. N., Hobbs, G. B., Teoh, A., & Hobbs, M. 2005, *AJ*, 129, 1993
- Miller, N. A., Neff, S. G., & Mushotzky, R. F. 2005, in *X-Ray and Radio Connections*, eds. L. O. Sjouwerman, & K. K. Dyer, 5.05
- Mirabel, I. F., & Rodríguez, L. F. 1998, *Nature*, 392, 673
- Mirabel, I. F., & Rodríguez, L. F. 1999, *ARA&A*, 37, 409
- Parker, Q. A., Bojičić, I. S., & Frew, D. J. 2016, *J. Phys. Conf. Ser.*, 728, 032008
- Phillips, P. C. B. 1982, *Biometrika*, 69, 261
- Purcell, C. R., Hoare, M. G., Cotton, W. D., et al. 2013, *ApJS*, 205, 1
- Reynoso, E. M., & Walsh, A. J. 2015, *MNRAS*, 451, 3044
- Robitaille, T., & Bressert, E. 2012, *Astrophysics Source Code Library* [record ascl:1208.017]
- Rosen, S. R., Webb, N. A., Watson, M. G., et al. 2016, *A&A*, 590, A1
- Rosolowsky, E., Dunham, M. K., Ginsburg, A., et al. 2010, *ApJS*, 188, 123
- Rugel, M. R., Beuther, H., Bühr, S., et al. 2018, *A&A*, 618, A159
- Rybicki, G. B., & Lightman, A. P. 1979, *Radiative processes in astrophysics* (New York: Wiley-Interscience), 393
- Sánchez-Monge, Á 2011, PhD Thesis
- Schuller, F., Menten, K. M., Contreras, Y., et al. 2009, *A&A*, 504, 415
- Seaquist, E. R. 1993, *Rep. Prog. Phys.*, 56, 1145
- Silich, S. 2005, in *X-Ray and Radio Connections*, eds. L. O. Sjouwerman, & K. K. Dyer, 3.03
- Stil, J. M., Taylor, A. R., Dickey, J. M., et al. 2006, *AJ*, 132, 1158
- Taylor, M. B. 2005, in *Astronomical Data Analysis Software and Systems XIV*, eds. P. Shopbell, M. Britton, & R. Ebert, *Astronomical Society of the Pacific Conference Series*, 347, 29
- Tetarenko, B. E., Bahramian, A., Arnason, R. M., et al. 2016, *ApJ*, 825, 10
- Urquhart, J. S., Thompson, M. A., Moore, T. J. T., et al. 2013, *MNRAS*, 435, 400
- van Breugel, W., Breuck, C., & Stanford, S. A. 1999, The Hy-Redshift Universe: Galaxy Formation and Evolution at High Redshift. *Astronomical Society of the Pacific Conference Series.*, 193, 44
- Watson, M. G., Schröder, A. C., Fyfe, D., et al. 2009, *A&A*, 493, 339
- Wilson, T. L., Rohlf, K., & Hüttemeister, S. 2013, *Tools of Radio Astronomy* (Heidelberg: Springer-Verlag Berlin)



## Appendix A: Noise maps

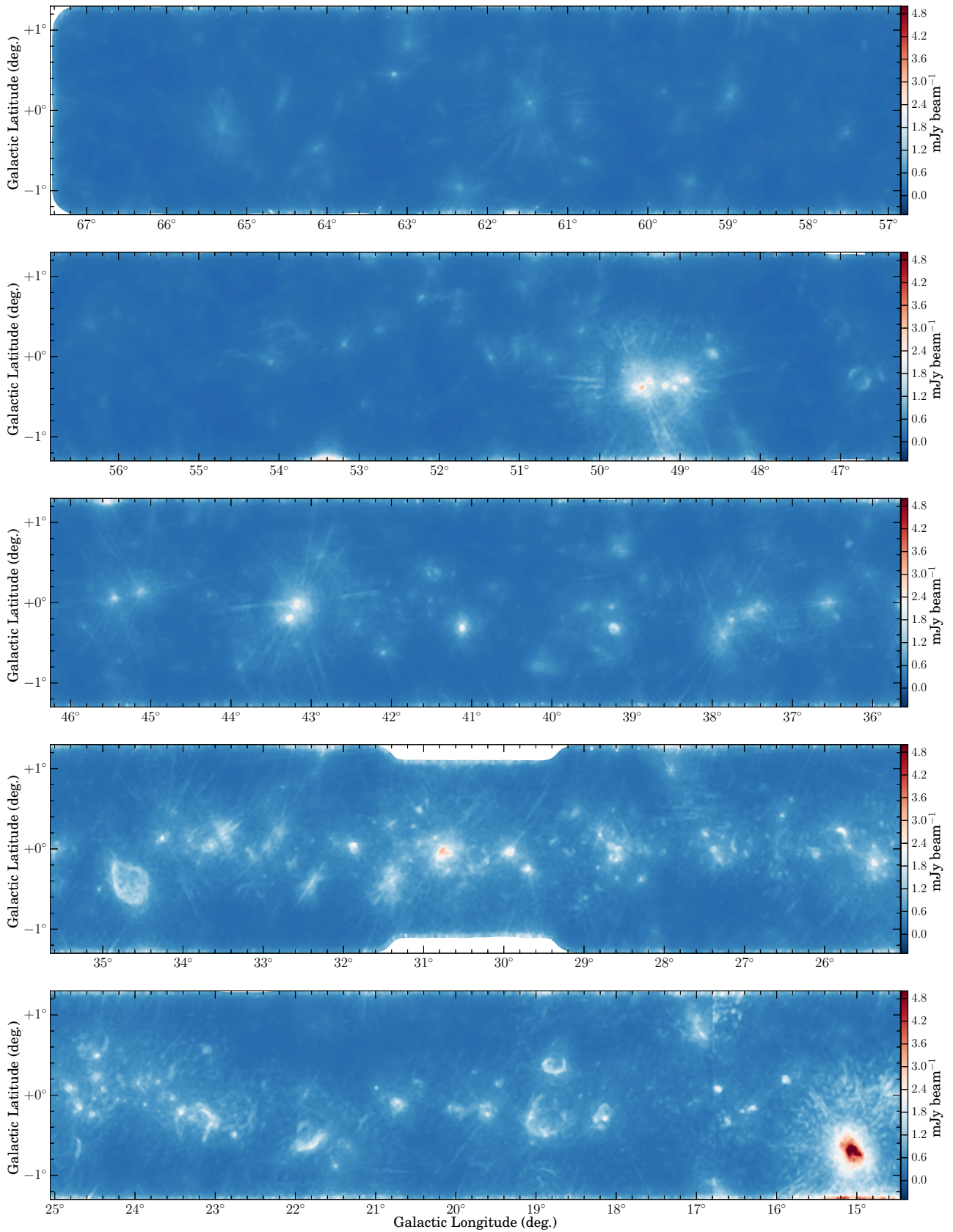
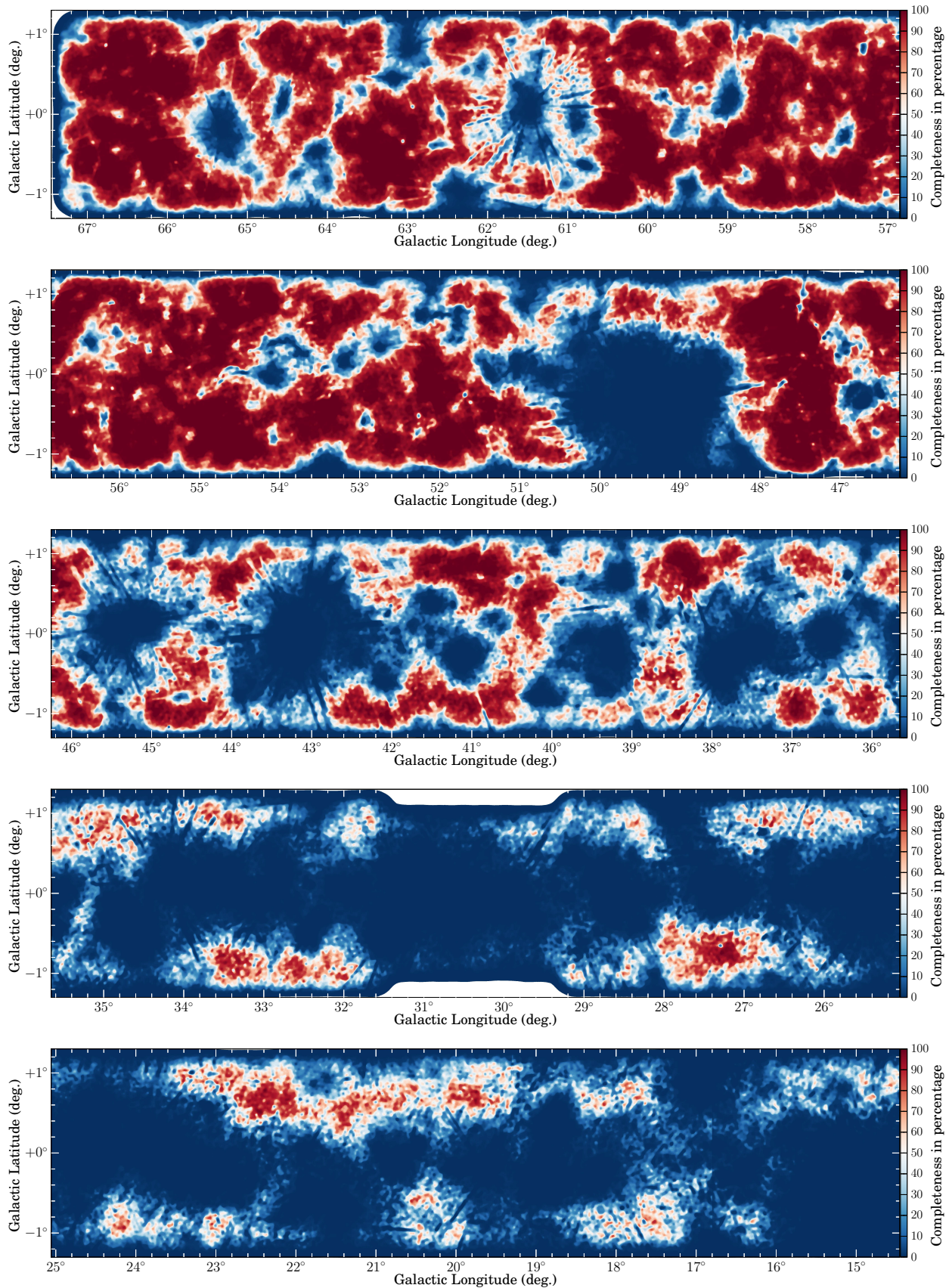


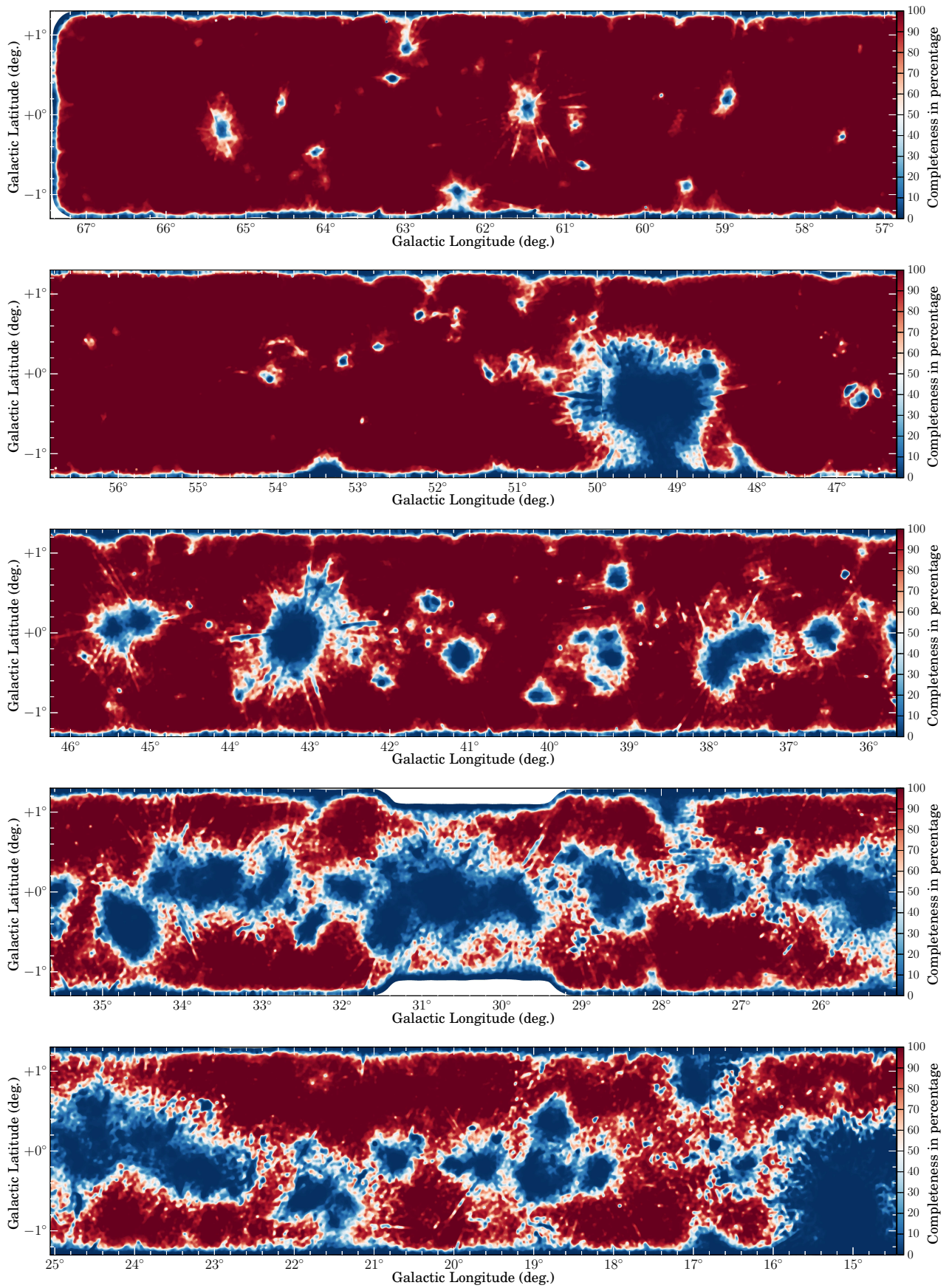
Fig. A.1. Noise map of the THOR survey using the average of spw-1440 and spw-1820.

## Appendix B: Completeness maps



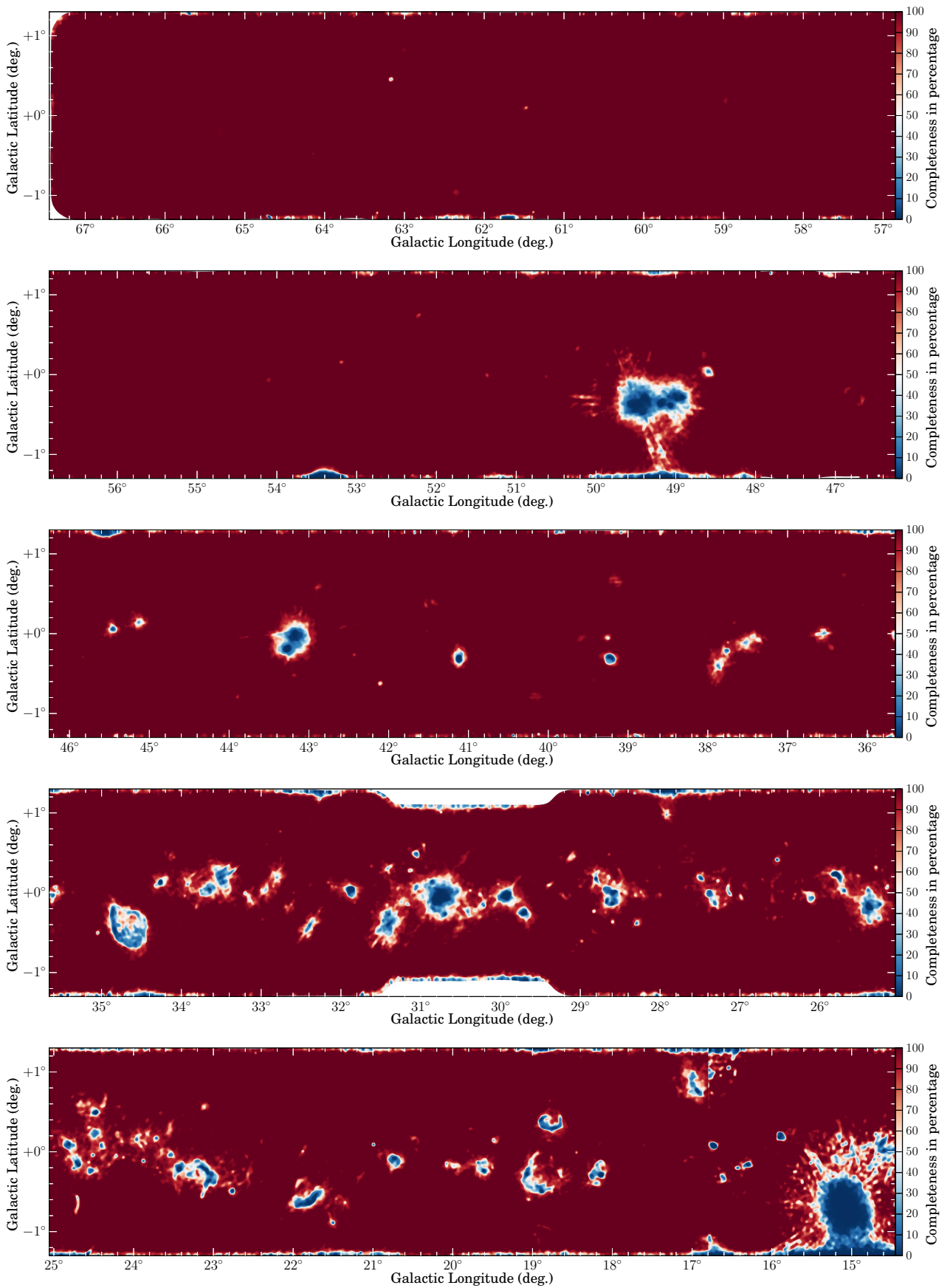
**Fig. B.1.** Completeness map in percentage for sources with a peak intensity of  $1 \text{ mJy beam}^{-1}$ .



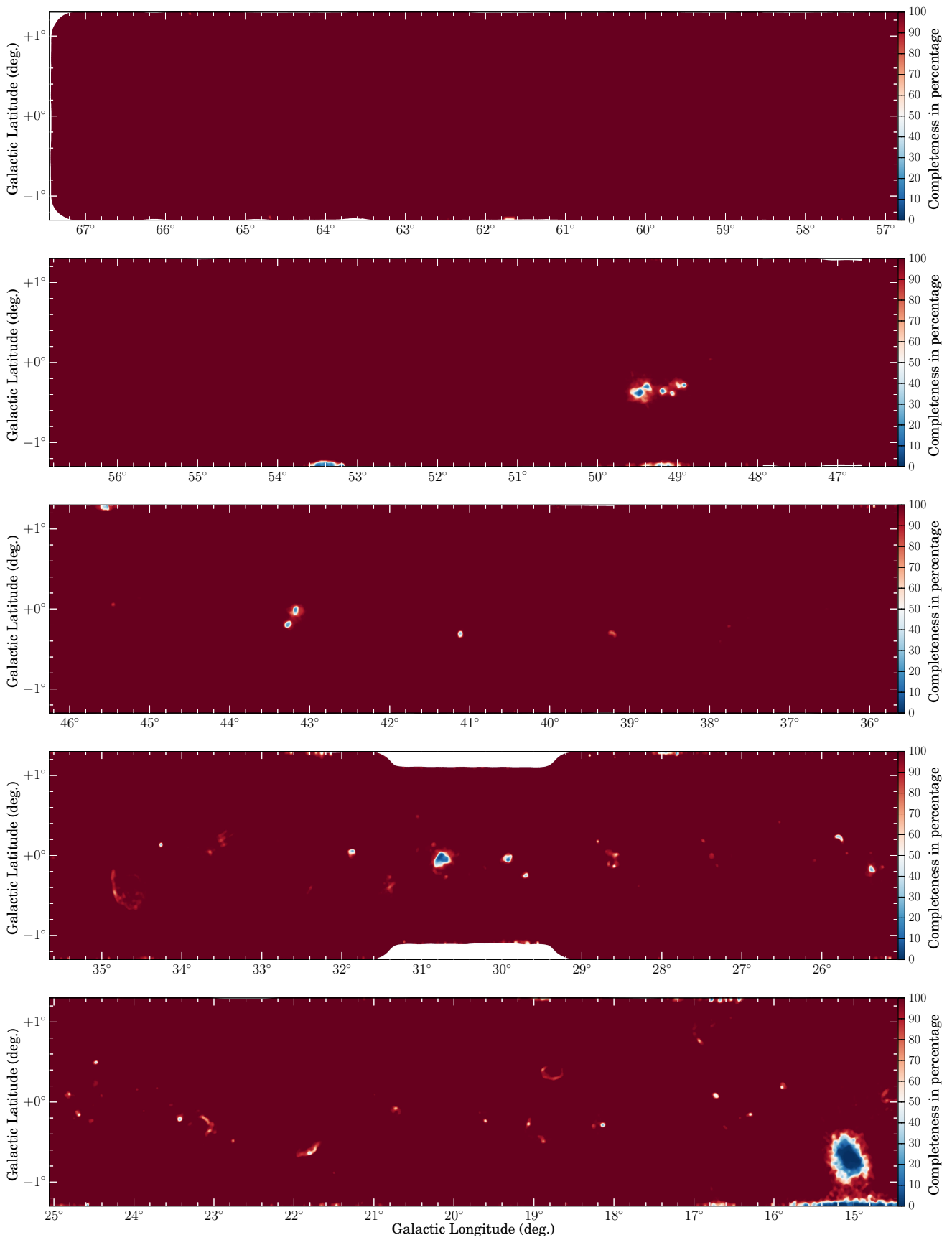


**Fig. B.2.** Completeness map in percentage for sources with a peak intensity of  $2 \text{ mJy beam}^{-1}$ .





**Fig. B.3.** Completeness map in percentage for sources with a peak intensity of  $5 \text{ mJy beam}^{-1}$ .



**Fig. B.4.** Completeness map in percentage for sources with a peak intensity of  $10 \text{ mJy beam}^{-1}$ .

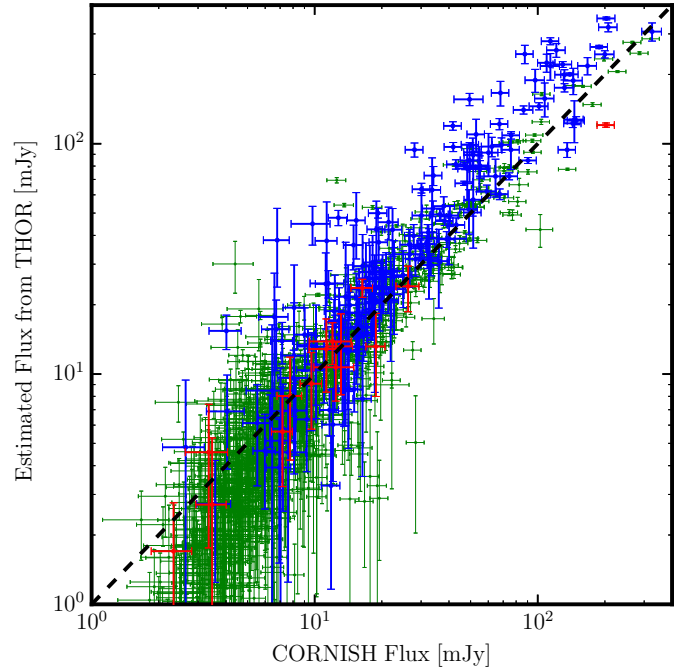
## Appendix C: Compare with CORNISH

Sources with a positive spectral index between 1 to 2 GHz are mostly dominated by optically thick free-free emission at these frequencies. The emission, however, should be optically thin at higher frequencies and should flatten the spectral index there (e.g., [Sánchez-Monge 2011](#)). If we estimate the flux density at 5 GHz for these sources, we could easily overestimate the flux. Since we do not have flux density measurements between 2 GHz and 5 GHz, we are not sure whether such overestimation would be due to the uncertainty of spectral index or optical depth variation.

Sources with a spectral index  $\lesssim -0.5$  are mostly dominated by synchrotron emission. Depending on the nature of the source, the spectral index could get flatter between 2 GHz and 5 GHz as a possible contribution from free-free emission could increase (e.g., [Condon 1992](#)) since free-free emission has a flat or positive spectral index. If we estimate the flux density at 5 GHz for these sources, we would underestimate the flux.

Sources with a flat spectral index ( $\sim -0.1$ ) in the THOR frequency range are dominated by optically thin free-free emission. The emission at 5 GHz would still be dominated by optically thin free-free emission, since the dust continuum is not relevant until  $\sim 100$  GHz and synchrotron emission contribution is even smaller than at the lower frequencies. Thus, we can estimate the flux density at 5 GHz from the THOR flux density measurements properly and reliably.

Among the 1905 THOR sources that are matched with a CORNISH source within a radius of  $5''$ , 1087 sources are unresolved and are detected in all six SPWs in THOR ( $\text{fit\_spws} = 6$ ). We extrapolated flux densities at 5 GHz for all these 1087 sources according to their spectral indices from the THOR catalog and plotted against the flux densities in the CORNISH catalog; see [Fig. C.1](#). [Figure C.1](#) shows that comparing to the flux densities in the CORNISH catalog, as expected we overestimate the flux density for many sources with a positive spectral index, and



**Fig. C.1.** Extrapolated flux densities at 5 GHz for all 1087 compact sources that are detected in all 6 SPWs in THOR ( $\text{fit\_spws} = 6$ ) according to their spectral indices from the THOR catalog plotted against the flux densities in the CORNISH catalog. The green crosses indicate sources with a spectral index smaller than 0, the blue crosses represent those with a spectral index larger than 0, and the red crosses indicate sources with a spectral index between  $-0.09$  and  $-0.11$  (optically thin free-free emission). The dashed line represents a one-to-one relation.

similarly we underestimate the flux density for many sources with a negative spectral index. This is expected for such a general extrapolation for the reasons explained above.



**Appendix D: PNe in our continuum catalog**

Table D.1. Detected PNe in THOR continuum catalog.

Gal.ID	RA (J2000)	Dec (J2000)	$S_p$ (mJy beam <sup>-1</sup> )	S/N	$\alpha$	$\Delta\alpha$	fit_spws	PNG(')	Name <sup>(1)</sup>
G14.585+0.462	18:15:21.10	-16:02:56.3	22.84	31	0.12	0.19	6	014.5+00.4	MPA J1815-1602
G14.658+1.012	18:13:29.12	-15:43:20.1	2.34	7	-0.84	0.51	4	014.6+01.0	PHR J1813-1543
G14.750-0.250	18:18:17.00	-16:14:31.2	23.97	28	-0.37	0.32	6	014.7-00.2*	
G14.779-0.333	18:18:38.70	-16:15:20.9	15.27	15	2.25	0.72	4	014.7-00.3*	
G14.896+0.484	18:15:53.16	-15:45:54.9	8.01	19	-0.26	0.71	4	014.8+00.4*	
G15.200-0.086	18:18:34.22	-15:46:06.0	11.17	9	-0.49	0.64	2	015.1-00.0*	
G15.518+1.034	18:15:06.47	-14:57:20.7	9.65	25	-0.46	0.20	6	015.5+01.0	PHR J1815-1457
G15.541+0.336	18:17:41.91	-15:16:04.0	13.95	30	0.55	0.29	6	015.5+00.3*	
G15.559+0.981	18:15:22.87	-14:56:43.9	4.04	14	-0.91	0.35	5	015.5+00.9*	Pa 99
G15.585+0.400	18:17:33.10	-15:11:56.5	11.13	25	0.81	0.38	5	015.5+00.3*a	
G15.800-0.006	18:19:27.38	-15:12:06.8	30.99	63	0.49	0.13	6	015.7-00.0*	MSX6C G015.7987-00.0060
G16.055+0.828	18:16:54.90	-14:34:54.6	9.92	24	-0.05	0.26	6	016.0+00.8	MSX6C G016.0545+00.8279
G16.228-0.368	18:21:36.82	-14:59:40.8	7.91	15	-0.33	0.34	6	016.2-00.3	GPSR5 16.2228-0.369
G16.428+1.007	18:16:59.72	-14:10:07.4	17.03	30	-0.58	0.21	6	016.4+01.0*	
G16.499+0.115	18:20:22.76	-14:31:39.4	14.00	29	-0.78	0.17	6	016.4+00.1*	
G17.015-0.190	18:22:29.76	-14:12:59.2	11.00	25	0.21	0.27	6	017.0-00.1*	
G17.221+0.129	18:21:43.92	-13:53:03.9	1.73	6	-0.96	0.48	4	017.2+00.1*	PHR J1821-1353
G17.367+0.523	18:20:35.06	-13:34:15.0	14.84	49	0.24	0.15	6	017.3+00.5	HRDS G017.364+0.519
G17.449+0.115	18:22:13.47	-13:41:24.1	7.37	23	-0.38	0.28	6	017.4+00.1*	
G17.588+1.068	18:19:02.18	-13:07:03.7	7.34	25	-0.23	0.26	5	017.5+01.0	MPA J1819-1307
G17.616-1.169	18:27:13.36	-14:08:34.0	75.50	152	0.03	0.03	6	017.6-01.1	VSP 2-18
G17.725-0.243	18:24:03.39	-13:36:50.6	50.26	141	0.11	0.04	6	017.7-00.2*	
G17.822+0.987	18:19:47.13	-12:57:00.8	12.55	37	0.11	0.19	6	017.8+00.9*	
G17.865+0.212	18:22:40.55	-13:16:39.1	7.87	20	0.82	0.44	5	017.8+00.2*	
G18.066+0.854	18:20:44.31	-12:47:52.7	26.78	97	0.11	0.06	6	018.0+00.8	IRAS 18179-1249
G18.241-0.555	18:26:11.05	-13:18:12.8	3.62	9	1.85	4.16	2	018.2-00.5*	
G18.241-0.915	18:27:29.77	-13:28:18.2	39.56	134	-0.14	0.03	6	018.2-00.9	MPA J1827-1328
G18.578-0.748	18:27:31.93	-13:05:45.6	5.52	20	0.01	0.42	6	018.5-00.7*	
G19.003+0.128	18:25:10.02	-12:18:38.5	5.73	12	-0.60	0.57	6	019.0+00.1*	
G19.119+0.818	18:22:53.58	-11:53:09.3	10.91	46	-0.41	0.15	6	019.1+00.8*	MPA J1822-1153
G19.468-0.015	18:26:34.37	-11:58:00.4	15.95	26	-0.10	0.24	6	019.4-00.0*	
G19.533+0.731	18:23:59.96	-11:33:38.9	3.56	16	-0.65	0.47	5	019.5+00.7*	GLIPN1823-1133
G19.610+1.187	18:22:30.08	-11:16:44.2	22.79	67	1.27	0.10	6	019.6+01.1	MSX6C G019.6095+01.1873
G19.649+0.774	18:24:03.96	-11:26:16.5	3.98	16	-0.22	0.29	6	019.6+00.7*	MPA J1824-1126
G19.930-0.664	18:29:47.85	-11:51:33.1	7.33	15	0.82	0.36	6	019.9-00.6*	
G19.945+0.913	18:24:07.92	-11:06:41.7	26.63	109	0.24	0.05	6	019.9+00.9	M 3-53
G20.432+0.357	18:27:03.55	-10:56:25.5	9.98	37	0.16	0.20	6	020.4+00.3*	MSX6C G020.4320+00.3571
G20.468+0.679	18:25:58.08	-10:45:29.9	63.93	232	0.69	0.03	6	020.4+00.6	PM 1-231
G20.517+0.478	18:26:47.27	-10:48:30.4	17.63	66	0.05	0.09	6	020.5+00.4*	
G20.978+0.925	18:26:03.07	-10:11:31.2	13.49	46	-0.30	0.14	6	020.9+00.9	IRAS 18232-1013
G20.983+0.851	18:26:19.48	-10:13:21.8	2.70	10	-0.60	0.42	6	020.9+00.8	PHR1826-1013

**Notes.** <sup>(1)</sup> This information is from the HASH PN database (Parker et al. 2016). The PNe with no 20 cm radio flux information in the HASH catalog are marked with \*.

Table D.1. continued.

Gal.ID	RA (J2000)	Dec (J2000)	$S_p$ (mJy beam <sup>-1</sup> )	S/N	$\alpha$	$\Delta\alpha$	fit_spws	PNG(1)	Name(1)
G20,999-1.125	18:33:28.96	-11:07:25.5	215.77	372	0.40	0.01	6	020.9-01.1	M 1-51
G21.165+0.476	18:28:01.26	-10:14:09.8	50.44	212	1.22	0.03	6	021.1+00.4	GLMP 781
G21.293+0.982	18:26:26.62	-09:53:14.6	2.14	8	0.21	0.43	5	021.2+00.9	PHR J1826-0953
G21.342-0.842	18:33:06.41	-10:41:21.5	4.89	10	1.91	1.40	2	021.3-00.8*	IRAS 18303-1043
G21.412+0.074	18:29:55.91	-10:12:13.2	1.49	5	-	-	-	021.4+00.0*	2MASS J18295609-1012119
G21.666+0.811	18:27:45.72	-09:38:14.4	21.79	71	1.43	0.10	6	021.6+00.8	PM 1-235
G21.685-0.738	18:33:22.44	-10:20:13.4	28.96	53	-0.08	0.11	6	021.6-00.7*	
G21.743-0.672	18:33:14.76	-10:15:18.7	6.68	8	-	-	-	021.7-00.6*	M 3-55
G21.820-0.478	18:32:41.30	-10:05:50.0	31.58	38	-0.45	0.14	6	021.8-00.4*	M 3-28
G21.997-0.883	18:34:28.96	-10:07:37.5	12.35	29	0.11	0.24	6	021.9-00.8*	
G22.221+0.901	18:28:28.99	-09:06:13.1	18.02	77	0.15	0.08	6	022.2+00.9	IRAS 18257-0908
G22.548-0.106	18:32:42.87	-09:16:49.3	27.58	49	0.29	0.13	6	022.5-00.1*	
G22.570+1.055	18:28:35.28	-08:43:23.3	24.75	85	-0.01	0.08	6	022.5+01.0	MaC 1-13
G22.658+0.295	18:31:28.59	-08:59:49.4	8.63	25	0.14	0.27	6	022.6+00.2*	
G23.440+0.745	18:31:19.62	-08:05:42.2	9.96	26	0.55	0.28	5	023.4+00.7*	PHR J1831-0805
G23.504-0.524	18:36:00.05	-08:37:26.5	23.33	51	0.31	0.18	5	023.5-00.5*	
G23.890-0.738	18:37:29.10	-08:22:47.0	55.10	171	0.89	0.04	5	023.8-00.7	GLMP 805
G23.909+1.219	18:30:30.31	-07:27:38.2	30.04	45	0.21	0.14	5	023.9+01.2	MA 13
G24.179+1.144	18:31:16.79	-07:15:22.1	5.54	13	-0.26	0.49	5	024.1+01.1	PHR J1831-0715
G24.385+0.287	18:34:43.75	-07:28:06.1	9.81	13	0.09	0.51	6	024.3+00.2*	MSEX6C G024.3854+00.2867
G24.430+0.966	18:32:22.92	-07:06:57.5	14.20	35	-0.18	0.15	6	024.4+00.9	MPA J1832-0706
G24.677+0.549	18:34:20.00	-07:05:18.2	19.74	24	1.19	0.33	5	024.6+00.5	MPA J1834-0706
G24.792-1.004	18:40:06.77	-07:41:59.1	10.09	22	0.09	0.27	6	024.7-01.0*	
G25.049-0.662	18:39:21.55	-07:18:55.2	19.00	46	0.86	0.15	6	025.0-00.6*	
G25.847+1.172	18:34:16.61	-05:45:49.6	25.83	68	-0.10	0.09	5	025.8+01.1*	Pe 1-14
G25.927-0.984	18:42:07.99	-06:40:54.5	8.65	32	-0.33	0.19	5	025.9-00.9	
G26.161+0.592	18:36:55.59	-05:45:03.3	24.68	82	-0.08	0.08	5	026.1+00.5*	
G26.715+0.132	18:39:35.54	-05:28:14.0	13.01	21	0.52	0.41	5	026.7+00.1*	
G26.795-1.050	18:43:57.82	-05:56:21.5	5.01	17	-0.27	0.42	5	026.8-01.0	MPA J1843-0556
G26.832-0.152	18:40:49.21	-05:29:45.9	9.05	29	-0.20	0.32	5	026.8-00.1*	MPA J1840-0529
G27.426-0.250	18:42:15.83	-05:00:46.4	6.36	11	-1.37	0.64	5	027.4-00.2*	
G27.586+1.018	18:38:02.06	-04:17:24.8	2.25	5	-	-	-	027.5+01.0*	PHR J1838-0417
G27.659-0.383	18:43:10.02	-04:51:58.5	3.46	12	-1.40	3.84	2	027.6-00.3*	MSEX6C G027.6594-00.3838
G27.664-0.827	18:44:45.59	-05:03:54.5	6.47	28	0.13	0.22	6	027.6-00.8	PHR J1844-0503
G27.702+0.705	18:39:21.78	-04:19:51.0	119.82	205	0.29	0.03	6	027.7+00.7	M 2-45
G27.886+0.503	18:40:25.30	-04:15:33.9	5.00	9	-	-	-	027.8+00.5*	MPA J1840-0415
G28.952+0.256	18:43:15.35	-03:25:27.2	22.00	33	-0.15	0.14	6	028.9+00.2*	PHR J1843-0325
G29.054+0.992	18:40:49.32	-02:59:51.3	5.46	19	-0.35	0.35	6	029.0+00.9*	Pa 112
G29.079+0.458	18:42:46.30	-03:13:09.6	21.98	21	-0.19	0.08	6	029.0+00.4	Abell 48
G29.211-0.069	18:44:53.35	-03:20:32.0	117.99	156	0.52	0.04	6	029.2+00.0	TDC 1
G29.874-0.819	18:48:46.54	-03:05:41.3	76.91	149	0.92	0.05	6	029.8-00.8	IRAS 18461-0309
G30.667-0.332	18:48:29.28	-02:10:01.4	49.22	55	0.89	0.13	6	030.6-00.3*	IRAS 18458-0213
G31.372-0.752	18:51:16.16	-01:43:50.1	20.52	33	0.33	0.16	6	031.3-00.7*	GPSR 031.374-0.752

Table D.1. continued.

Gal.ID	RA (J2000)	Dec (J2000)	$S_p$ (mJy beam $^{-1}$ )	S/N	$\alpha$	$\Delta\alpha$	fit_spws	PNG(1)	Name(1)
G31.907-0.308	18:50:39.95	-01:03:11.1	6.82	13	0.05	0.25	6	031.9-00.3*	WeSb 4
G32.307+0.154	18:49:45.11	-00:29:08.6	16.10	42	0.54	0.19	6	032.3+00.1*	1541-4EAC
G32.498+0.162	18:50:04.27	-00:18:43.6	5.610	12	-1.04	0.39	6	032.4+00.1*	MGE 032.4982+00.1615
G32.548-0.473	18:52:25.45	-00:33:25.9	39.54	61	0.72	0.06	6	032.5-00.4	MPA J1852-0033
G32.550-0.295	18:51:47.44	-00:28:28.5	3.88	8	-	-	-	032.5-00.3*	Te 7
G32.614+0.797	18:48:01.27	+00:04:49.0	4.09	10	1.42	1.06	3	032.6+00.7*	PM 1-258
G32.859+0.281	18:50:18.27	+00:03:46.4	6.44	8	0.51	0.54	3	032.8+00.2*	MGE 032.8593+00.2806
G32.939-0.747	18:54:06.74	-00:20:03.7	5.43	18	-0.51	0.38	6	032.9-00.7*	CBSS 3
G33.147+1.044	18:48:06.89	+00:40:03.6	26.93	105	-0.36	0.06	6	033.1+01.0*	
G33.353+0.404	18:50:45.90	+00:33:31.3	7.87	13	1.10	0.95	4	033.3+00.4*	
G33.454-0.615	18:54:34.74	+00:11:03.8	21.32	76	1.38	0.11	6	033.4-00.6	GLMP 844
G33.959+1.243	18:48:53.01	+01:28:51.1	6.20	9	-	-	-	033.9+01.2	IPHAS J184853.00+012852.2
G33.978-0.985	18:56:51.09	+00:28:53.5	3.80	13	-0.81	0.45	5	033.9-00.9*	PHR J1856+0028
G34.179-0.178	18:54:20.74	+01:01:43.6	11.76	27	0.13	0.31	6	034.1-00.1*	
G34.420-0.318	18:55:17.09	+01:10:43.6	5.97	8	-0.49	1.23	2	034.4-00.3*	PM 1-265
G34.862-0.063	18:55:10.93	+01:41:21.1	45.37	60	0.40	0.12	6	034.8-00.0*	IRAS 18526+0137
G35.565-0.491	18:57:59.60	+02:07:07.7	71.20	115	-0.01	0.05	6	035.5-00.4	PHR J1857+0207
G35.770-1.245	19:01:03.04	+01:57:23.8	4.21	6	-	-	-	035.7-01.2	UWISH2 PN 3
G35.814-0.253	18:57:36.10	+02:26:57.8	1.69	5	-	-	-	035.8-00.2*	UWISH2 PN 2
G36.012-0.256	18:57:58.29	+02:37:25.2	11.57	49	0.92	0.19	6	036.0-00.2*	
G36.539+0.201	18:57:18.44	+03:18:05.4	18.89	42	-0.17	0.12	6	036.5+00.2*	
G36.954-1.181	19:02:59.44	+03:02:19.3	8.91	31	-0.52	0.16	6	036.9-01.1	HaTr 11
G37.903-0.275	19:01:30.36	+04:17:50.6	19.29	25	0.57	0.21	6	037.9-00.2*	
G37.960+0.454	18:59:00.53	+04:40:52.2	10.58	31	0.91	0.26	6	037.9+00.4	IRAS 18564+0436
G40.261-0.276	19:05:51.00	+06:23:32.4	3.73	17	0.59	0.58	6	040.2-00.2*	
G40.336-1.010	19:08:36.72	+06:07:15.9	11.37	49	-0.14	0.12	6	040.3-01.0*	
G40.370-0.474	19:06:45.51	+06:23:53.9	13.47	46	-0.05	0.04	6	040.3-00.4	Abell 53
G40.554-0.091	19:05:43.83	+06:44:13.9	4.84	24	-0.13	0.29	5	040.5-00.0*	IPHASX J190543.8+064413
G41.271-0.697	19:09:13.60	+07:05:44.0	3.73	18	-0.88	0.29	6	041.2-00.6*	HaTr 14
G41.354+0.539	19:04:57.38	+07:44:16.2	36.43	131	0.32	0.05	6	041.3+00.5*	
G42.242+1.180	19:04:18.01	+08:49:14.9	1.89	6	-	-	-	042.2+01.1*	IPHASX J190417.9+084916
G42.663-0.865	19:12:25.41	+08:15:07.3	16.75	76	-0.24	0.10	6	042.6-00.8	PM 1-288
G42.767+0.822	19:06:33.70	+09:07:21.1	9.82	24	-0.32	0.18	6	042.7+00.8	[GKF2010] MN102
G43.029+0.140	19:09:30.19	+09:02:26.6	66.52	77	1.13	0.06	6	043.0+00.1	GLMP 879
G43.294-0.646	19:12:49.29	+08:54:48.0	38.97	89	1.28	0.08	6	043.2-00.6	IRAS 19104+0849
G43.580+0.026	19:10:56.62	+09:28:37.0	9.82	23	0.93	0.29	5	043.5+00.0*	1631-598D
G44.638+0.483	19:11:17.20	+10:37:35.0	14.63	54	0.45	0.14	6	044.6+00.4	IRAS 19089+1032
G44.735+0.260	19:12:16.21	+10:36:33.4	8.02	23	0.32	0.34	6	044.7+00.2	AGP 1
G44.949+0.898	19:10:22.18	+11:05:38.6	7.78	26	-0.01	0.20	6	044.9+00.8	IPHASX J191022.1+110538
G45.283-0.627	19:16:30.44	+10:40:56.8	20.12	72	0.80	0.10	6	045.2-00.6	1648-2717
G45.661+1.040	19:11:11.93	+11:47:27.1	4.11	13	-0.23	0.46	6	045.6+01.0*	Pa 128
G46.975+0.270	19:16:29.09	+12:35:51.5	17.15	60	0.06	0.12	6	046.9+00.2*	
G47.611+1.082	19:14:45.09	+13:32:18.4	1.37	9	-0.54	0.66	4	047.6+01.0*	IPHASX J191445.1+133219



Table D.1. continued.

Gal.ID	RA (J2000)	Dec (J2000)	$S_p$ (mJy beam $^{-1}$ )	S/N	$\alpha$	$\Delta\alpha$	fit_spws	PNG(1)	Name(1)
G47.636-1.232	19:23:11.47	+12:28:37.3	17.02	36	-0.29	0.11	6	047.6-01.2*	Pa 132
G47.688-0.302	19:19:55.74	+12:57:37.7	3.73	28	1.27	0.33	4	047.6-00.3*	PM 1-296
G47.987+0.202	19:18:40.40	+13:27:39.9	8.07	46	-0.22	0.17	6	047.9+00.2*	
G48.162+1.163	19:15:30.59	+14:03:49.0	17.81	67	1.32	0.12	6	048.1+01.1	K 3-29
G48.732+0.930	19:17:27.34	+14:27:35.8	17.12	76	0.40	0.08	6	048.7+00.9	IPHASX J191727.2+142735
G50.040+1.096	19:19:22.93	+15:41:36.7	15.18	44	0.17	0.14	6	050.0+01.0	IRAS 19171+1536
G50.556+0.045	19:24:14.60	+15:39:12.4	93.33	215	0.72	0.02	6	050.5+00.0	NVSS J192414+153909
G50.895+0.057	19:24:52.01	+15:57:28.7	7.97	23	-0.43	0.36	6	050.8+00.0*	
G51.022-0.489	19:27:06.85	+15:48:37.5	1.92	14	0.07	0.48	5	051.0-00.4*	MGE 051.0214-00.4885
G51.510+0.167	19:25:40.57	+16:33:04.8	107.19	314	-0.04	0.01	6	051.5+00.2	KLW 1
G51.606+0.914	19:23:07.27	+16:59:21.5	11.96	72	0.80	0.10	6	051.6+00.9*	
G51.834+0.284	19:25:53.53	+16:53:31.9	54.21	252	0.61	0.02	6	051.8+00.2	IPHAS J192553.53+165331.4
G52.150-0.376	19:28:56.77	+16:51:17.4	40.02	251	-0.65	0.03	6	052.1-00.3*	
G54.712+0.420	19:31:10.80	+19:29:04.4	1.06	10	-1.20	0.77	4	054.7+00.4*	UWISH2 PN 4
G55.507-0.558	19:36:26.87	+19:42:23.6	96.49	560	1.12	0.01	6	055.5-00.5	M 1-71
G56.402-0.903	19:39:35.73	+20:19:03.3	9.60	60	0.80	0.11	6	056.4-00.9	K 3-42
G56.422-0.373	19:37:40.14	+20:35:43.1	3.60	21	-0.15	0.17	6	056.4-00.3	IPHASX J193740.4+203547
G57.980-0.768	19:42:26.08	+21:45:21.4	2.66	21	-0.72	0.27	5	057.9-00.7	Kn 7
G58.179-0.811	19:43:01.32	+21:54:25.9	1.52	8	-0.68	0.56	4	058.1-00.8	IPHASX J194301.3+215424
G58.641+0.919	19:37:29.40	+23:09:47.2	3.54	22	-0.12	0.47	5	058.6+00.9	PM 1-309
G59.399-0.788	19:45:34.20	+22:58:33.6	27.54	110	0.26	0.05	6	059.4-00.7	PM 1-313
G59.778-0.829	19:46:33.11	+23:16:59.3	3.31	22	-1.05	0.35	5	059.7-00.8	IPHASX J194633.0+231659
G59.824-0.536	19:45:32.94	+23:28:11.2	17.95	98	0.69	0.05	6	059.8-00.5	2MASS J19453289+2328105
G59.991+0.686	19:41:16.63	+24:13:25.5	0.64	5	-	-	-	059.9+00.6*	PM 1-311
G60.249+0.822	19:41:19.09	+24:30:53.2	7.78	57	-0.58	0.10	6	060.2+00.8	Kn 11
G60.524-0.318	19:46:15.60	+24:11:04.6	3.32	21	-0.61	0.50	5	060.5-00.3	K 3-45
G60.987-0.570	19:48:14.27	+24:27:27.8	6.65	27	0.60	0.40	4	060.9-00.5	IRAS 19461+2419
G61.206-0.088	19:46:53.58	+24:53:23.0	4.70	20	-1.02	0.35	6	061.2-00.0*	PM 1-314
G62.494-0.270	19:50:28.47	+25:54:30.5	19.84	104	-0.24	0.06	6	062.4-00.2	M 2-48
G62.702+0.060	19:49:40.93	+26:15:20.2	4.15	21	-0.67	0.38	5	062.7+00.0	IPHASX J194940.9+261521
G62.755-0.727	19:52:48.91	+25:53:58.1	15.39	105	0.09	0.07	6	062.7-00.7	IPHASX J195248.8+255359
G63.045+0.598	19:48:23.27	+26:49:26.7	5.73	22	-0.38	0.32	6	063.0+00.5*	
G63.523+0.089	19:51:26.54	+26:58:37.7	3.59	20	-0.10	0.47	5	063.5+00.0	IPHASX J195126.5+265839
G63.889+0.123	19:52:09.18	+27:18:31.8	29.92	116	0.03	0.04	6	063.8+00.1	K 3-48
G64.730-0.518	19:56:35.12	+27:41:53.5	7.17	37	-0.18	0.18	6	064.7-00.5*	Pa 139
G65.893-0.866	20:00:41.34	+28:30:26.4	0.68	5	0.76	0.71	3	065.8-00.8	IPHASX J200041.5+283023
G65.914+0.599	19:55:01.93	+29:17:22.8	2.26	15	-0.57	0.13	6	065.9+00.5	NGC 6842

**Appendix E: Detected pulsars in our continuum catalog****Table E.1.** Detected pulsars in our continuum catalog

Gal.ID	RA (J2000)	Dec (J2000)	$S_p$ (mJy beam <sup>-1</sup> )	$S/N$	$\alpha$	$\Delta\alpha$	fit_spws	PSR Name
G16.405+0.610	18:18:23.69	-14:22:38.1	5.60	14	-2.95	0.30	6	B1815-14
G17.160+0.483	18:20:19.69	-13:46:17.0	2.40	7	-	-	-	B1817-13
G18.001-0.691	18:26:13.18	-13:34:47.9	3.55	16	-1.29	0.48	5	B1823-13
G19.767+0.946	18:23:40.30	-11:15:10.5	3.48	17	-1.55	0.32	6	B1820-11
G19.810+0.741	18:24:29.54	-11:18:40.0	1.01	6	-1.05	1.73	2	B1821-11
G21.286+0.798	18:27:05.49	-09:58:43.4	1.74	8	-2.72	4.08	2	B1824-10
G23.385+0.063	18:33:40.15	-08:27:32.1	4.89	8	-1.35	1.10	3	B1830-08
G25.172+0.762	18:34:29.38	-06:33:03.3	1.77	5	0.06	1.36	2	J1834-0633
G27.073-0.941	18:44:05.09	-05:38:32.7	1.93	9	-2.03	0.59	4	B1841-05
G27.322-0.033	18:41:17.95	-05:00:21.6	6.27	6	-	-	-	J1841-0500
G27.818+0.279	18:41:05.74	-04:25:21.6	2.11	6	0.97	1.57	2	B1838-04
G28.193-0.785	18:45:34.76	-04:34:29.2	2.19	8	0.4	1.93	2	B1842-04
G28.347+0.174	18:42:26.55	-03:59:59.6	6.83	12	-1.88	0.89	3	B1839-04
G28.876-0.939	18:47:22.78	-04:02:15.3	3.01	10	-1.90	0.60	3	B1844-04
G31.339+0.039	18:48:23.56	-01:23:58.9	10.64	14	-1.15	0.77	3	B1845-01
G32.763+0.091	18:50:48.27	-00:06:31.1	12.99	17	-0.66	0.35	6	J1850-0006
G36.007+0.057	18:56:50.89	+02:45:45.4	1.50	6	-2.84	5.76	2	J1856+0245
G37.213-0.637	19:01:31.72	+03:31:05.4	3.27	9	-3.21	1.17	2	B1859+03
G38.163-0.151	19:01:32.37	+04:35:08.1	5.45	17	-2.86	0.31	5	J1901+0435
G39.814+0.335	19:02:50.39	+06:16:33.2	1.52	7	-4.68	0.64	2	B1900+06
G40.569+1.056	19:01:39.01	+07:16:34.4	1.78	10	-1.00	0.82	4	B1859+07
G40.604-0.304	19:06:35.18	+06:41:03.9	2.27	10	-	-	-	B1904+06
G40.944+0.065	19:05:53.73	+07:09:19.0	1.25	6	-	-	-	B1903+07
G41.520-0.871	19:10:18.84	+07:14:09.5	1.07	5	-0.89	1.23	2	J1910+0714
G41.740-0.772	19:10:22.07	+07:28:35.8	1.19	8	-1.08	1.31	2	J1910+0728
G43.501-0.684	19:13:20.74	+09:04:42.2	2.61	7	-	-	-	J1913+0904
G44.557-1.019	19:16:32.43	+09:51:26.8	1.53	11	0.01	2.34	2	B1914+09
G44.707-0.650	19:15:29.98	+10:09:43.9	1.15	7	-2.09	3.31	2	B1913+10
G44.832+0.992	19:09:48.76	+11:02:02.5	1.75	9	0.51	1.12	3	B1907+10
G47.576+0.451	19:16:58.69	+13:12:49.4	1.84	18	-0.73	0.48	5	B1914+13
G48.260+0.624	19:17:39.80	+13:53:56.6	4.68	33	-1.74	0.22	6	B1915+13
G49.096+0.866	19:18:23.54	+14:45:04.0	2.10	13	-0.45	1.08	3	B1916+14
G51.859+0.063	19:26:45.32	+16:48:32.0	1.42	10	0.76	1.37	3	B1924+16
G55.575+0.639	19:32:07.99	+20:20:47.6	0.88	7	-3.67	3.30	2	B1929+20
G57.509-0.290	19:39:38.59	+21:34:58.7	11.05	21	-3.78	0.13	6	B1937+21
G57.903+0.308	19:38:14.12	+22:13:11.6	0.74	5	2.73	1.29	2	J1938+2213
G65.839+0.443	19:55:27.97	+29:08:43.4	1.13	10	-0.69	1.62	3	B1953+29
G65.924+0.772	19:54:22.47	+29:23:16.3	8.10	43	-3.45	0.13	6	B1952+29

## Appendix F: X-ray sources detected in our continuum catalog

Table F.1. X-ray sources detected in our continuum catalog.

Gal.ID	RA (J2000)	Dec (J2000)	$S_p$ (mJy beam <sup>-1</sup> )	$S/N$	$\alpha$	$\Delta\alpha$	fit_spws	X-ray ID
G14.926+0.040	18:17:34.12	-15:56:56.5	11.58	13	-0.41	0.39	6	3XMM J181734.1-155655
G15.179-0.844*	18:21:18.47	-16:08:39.4	12.95	5	-1.47	0.46	4	CXO J182118.0-160838
G15.487+0.340	18:17:34.65	-15:18:46.5	82.29	132	-1.08	0.03	6	3XMM J181734.5-151847
G16.471+0.150	18:20:11.91	-14:32:12.0	17.02	35	1.27	0.23	6	3XMM J182011.7-143210
G16.667+0.693*	18:18:36.18	-14:06:25.9	5.45	9	0.84	2.73	2	3XMM J181836.3-140626
G16.733-1.185	18:25:35.01	-14:55:54.9	354.21	329	-0.99	0.01	6	CXO J182534.8-145556;3XMM J182534.7-145554
G17.071+0.607*	18:19:42.09	-13:47:30.6	3.97	8	-	-	-	CXO J181941.9-134735
G17.227+0.880	18:19:00.97	-13:31:31.2	107.64	168	-0.69	0.03	6	CXO J181900.9-133131
G17.772+0.409*	18:21:46.95	-13:16:01.5	8.18	21	-0.72	0.24	6	3XMM J182146.9-131602
G17.777-0.737	18:25:57.42	-13:47:56.2	18.36	62	-0.54	0.09	6	ISXPS J182557.4-134753
G18.156-0.823*	18:26:59.79	-13:30:11.7	1.76	7	-2.61	4.66	2	3XMM J182659.9-133012
G19.235-0.127*	18:26:32.04	-12:13:29.9	3.31	6	0.29	0.71	3	3XMM J182631.7-121336
G19.236+0.495	18:24:17.02	-11:56:00.9	98.64	274	-0.75	0.02	6	3XMM J182416.7-115558
G19.384-0.461*	18:28:01.47	-12:14:55.4	5.29	13	-1.66	0.39	5	3XMM J182801.4-121458
G20.367+0.449	18:26:36.22	-10:57:17.9	102.55	293	-0.36	0.02	6	3XMM J182636.4-105719
G20.409+0.100*	18:27:56.70	-11:04:47.9	3.63	6	-	-	-	3XMM J182756.7-110447
G20.923+0.213	18:28:30.65	-10:34:20.3	124.64	268	-0.89	0.02	6	ISXPS J182830.6-103415
G21.104-0.976*	18:33:08.47	-10:57:46.4	2.03	6	-0.34	0.59	2	3XMM J183308.8-105752
G21.347-0.629	18:32:20.73	-10:35:10.7	930.3	917	-0.00	0.00	6	ISXPS J183220.9-103509;CXO J183220.8-103510;3XMM J183220.8-103509
G21.622-0.742*	18:33:16.21	-10:23:41.2	6.36	13	-0.82	0.72	5	ISXPS J183316.2-102341;3XMM J183316.2-102341
G21.655-0.361	18:31:57.49	-10:11:23.9	29.25	53	0.94	0.14	6	3XMM J183157.5-101123
G22.155-0.156	18:32:09.44	-09:39:04.5	34.01	76	0.18	0.05	6	ISXPS J183208.9-093905;3XMM J183208.9-093905
G22.933-0.076	18:33:19.61	-08:55:28.9	120.22	155	-0.67	0.02	6	3XMM J183319.5-085528
G25.266-0.161	18:37:57.96	-06:53:31.6	534.1	393	-0.69	0.01	6	ISXPS J183757.9-065331;CXO J183758.0-065331;3XMM J183758.0-065331
G25.320-0.098	18:37:50.40	-06:48:56.7	34.56	28	-1.02	0.14	6	CXO J183750.5-064856;3XMM J183750.5-064854
G26.239-0.080	18:39:28.20	-05:59:26.6	89.3	123	-0.89	0.04	5	CXO J183928.1-055925
G26.398-0.104*	18:39:51.15	-05:51:36.5	2.28	5	-	-	-	3XMM J183951.1-055135
G26.560-0.175*	18:40:24.13	-05:44:53.7	10.77	20	-0.75	0.38	5	ISXPS J184024.4-054446;3XMM J184023.9-054445
G26.757-0.413*	18:41:36.98	-05:40:55.2	1.49	5	-2.27	1.76	2	3XMM J184136.8-054045
G26.760-0.403*	18:41:35.31	-05:40:30.3	1.46	5	-	-	-	ISXPS J184135.2-054030;3XMM J184135.2-054029
G28.098-0.781	18:45:23.42	-04:39:28.8	61.15	196	-1.02	0.02	6	3XMM J184523.4-043927
G28.402+0.479	18:41:27.26	-03:48:44.2	124.6	228	0.70	0.02	6	CXO J184127.3-034844
G29.159-0.722*	18:47:07.32	-03:41:13.1	11.46	29	-0.49	0.24	6	ISXPS J184707.3-034110
G29.719-0.031	18:45:40.95	-02:52:24.1	11.35	15	-1.04	0.41	6	CXO J184541.1-025227;3XMM J184541.1-025225
G30.236-0.572*	18:48:33.32	-02:39:36.4	5.94	14	-0.29	0.96	3	3XMM J184833.2-023937
G30.246-0.910	18:49:46.75	-02:48:20.9	5.95	16	-1.24	0.39	5	ISXPS J184946.9-024815
G30.437-0.206	18:47:37.24	-02:18:51.6	12.75	12	-0.99	0.52	6	ISXPS J184737.2-021848
G31.150-0.189	18:48:51.75	-01:40:18.8	20.52	30	-0.82	0.22	6	CXO J184852.1-014026
G31.897+0.316	18:48:25.43	-00:46:36.0	26.08	62	-1.23	0.10	6	3XMM J184825.4-004635
G32.482-0.123	18:51:03.44	-00:27:23.6	21.69	45	0.07	0.13	6	CXO J185103.7-002726
G32.491-1.066*	18:54:25.64	-00:52:43.1	1.23	7	-	-	-	3XMM J185425.7-005241
G33.275+1.069*	18:48:15.38	+00:47:33.6	4.01	14	-0.76	0.36	6	3XMM J184815.3+004733
G33.498+0.194	18:51:46.74	+00:35:31.3	822.8	496	-0.35	0.01	6	3XMM J185146.7+003533
G33.595+0.184*	18:51:59.40	+00:40:26.3	5.07	5	-	-	-	3XMM J185159.6+004013

Notes. Sources that do not have radio counterparts in SIMBAD or NED are marked with \*.



Table F.1. continued.

Gal.ID	RA (J2000)	Dec (J2000)	$S_p$ (mJy beam <sup>-1</sup> )	S/N	$\alpha$	$\Delta\alpha$	fit_spws	X-ray ID
G34.576-0.320*	18:55:34.59	+01:19:01.0	4.67	5	—	—	—	3XMM J185535.1+011855
G35.786+0.064*	18:56:25.03	+02:34:07.8	2.64	6	0.42	2.67	2	1SXPS J185625.1+023410;3XMM J185625.1+023406
G36.551+0.002	18:58:02.33	+03:13:15.2	832.33	651	-0.23	0.01	6	3XMM J185802.3+031316
G39.907-0.972*	19:07:40.91	+05:45:27.7	1.34	6	4.82	3.31	2	CXO J190740.8+054528
G40.437-0.797*	19:08:02.35	+06:18:32.9	1.56	9	—	—	—	3XMM J190802.5+061833
G42.895+0.573	19:07:41.80	+09:07:19.2	352.36	415	-0.51	0.01	6	1SXPS J190741.6+090715;3XMM J190742.0+090713
G43.407-0.021	19:10:47.32	+09:18:09.5	40.93	40	-1.04	0.07	6	3XMM J191047.7+091806
G45.366-0.219	19:15:11.52	+10:56:44.4	108.14	188	0.10	0.03	6	3XMM J191511.4+105645
G49.093-0.462*	19:23:13.84	+14:07:27.7	11.9	10	-0.28	0.42	5	3XMM J192313.4+140727
G49.113+0.935*	19:18:10.57	+14:47:55.8	1.22	6	—	—	—	3XMM J191810.7+144754
G53.769+0.161*	19:30:13.64	+18:32:01.4	1.32	5	—	—	—	1SXPS J193013.6+183203
G54.116-1.014*	19:35:16.00	+18:16:11.7	0.74	5	—	—	—	1SXPS J193516.3+181613
G55.237+0.387*	19:32:22.82	+19:55:45.4	1.31	12	-1.93	0.82	4	1SXPS J193222.6+195543
G56.082+0.105	19:35:10.44	+20:31:54.7	319.89	1206	0.44	0.00	6	1SXPS J193510.2+203156
G57.157+0.796*	19:34:49.41	+21:48:24.9	1.53	11	-0.36	1.00	4	3XMM J193449.4+214824
G57.161+0.746*	19:35:01.48	+21:47:11.1	1.08	7	-1.44	3.13	2	3XMM J193501.3+214710
G57.414+0.855*	19:35:08.35	+22:03:36.7	0.69	5	—	—	—	3XMM J193508.2+220336
G59.031+0.850*	19:38:35.28	+23:28:08.3	2.07	13	-0.55	0.55	4	1SXPS J193835.5+232804
G59.774+0.047*	19:43:14.14	+23:43:05.1	0.96	6	-2.29	3.21	2	CXO J194314.5+234307
G59.908+0.199*	19:42:57.05	+23:54:34.4	4.01	14	1.00	0.68	4	CXO J194257.3+235435
G61.444+1.227	19:42:22.78	+25:45:13.4	3.53	7	-1.82	1.35	2	1SXPS J194222.7+254518
G63.271-1.158	19:55:38.63	+26:07:10.1	3.23	13	-1.02	0.52	5	1SXPS J195538.5+260708;3XMM J195538.4+260708
G63.356-0.976*	19:55:08.74	+26:17:11.9	0.95	7	—	—	—	1SXPS J195508.3+261712
G63.658+1.188	19:47:29.19	+27:39:01.6	34.15	70	-1.16	0.05	6	3XMM J194729.1+273903
G63.750+1.071*	19:48:09.22	+27:40:14.9	1.58	8	0.99	1.12	3	3XMM J194809.5+274023
G63.791-0.176*	19:53:04.71	+27:04:15.1	0.65	6	2.21	1.38	2	3XMM J195304.4+270413
G63.905+0.998*	19:48:47.56	+27:46:04.7	1.59	10	-1.02	0.84	3	CXO J194847.4+274605;3XMM J194847.4+274603
G64.075+0.077*	19:52:45.54	+27:26:39.9	1.19	8	-3.31	1.15	3	3XMM J195245.4+272637
G65.665+1.042*	19:52:42.21	+29:18:16.8	1.74	8	-1.11	0.73	3	CXO J195241.8+291820;3XMM J195241.9+291821
G65.678+1.205*	19:52:05.48	+29:23:58.1	3.82	9	-1.31	0.81	3	CXO J195206.1+292353
G65.731+1.063	19:52:46.28	+29:22:19.7	6.19	24	-1.64	0.23	6	CXO J195246.4+292213
G65.779-0.337*	19:58:21.98	+28:41:17.0	1.45	9	-7.52	2.33	2	1SXPS J195821.6+284118
G65.950-0.184	19:58:10.66	+28:54:50.2	14.12	85	-1.03	0.07	6	1SXPS J195810.6+285449
G66.766+0.458	19:57:37.30	+29:56:39.4	7.20	50	-0.13	0.14	6	1SXPS J195737.5+295640
G66.891+0.083*	19:59:23.87	+29:51:19.9	3.24	22	-0.47	0.35	5	1SXPS J195923.8+295115